

TIRE CATALOGUE

ALL STEEL TRUCK & BUS RADIAL



WEST LAKE

Made in Thailand / North America Version



- A Company Established in Year 1958
- No. 1 Tire Manufacturer in China
- No. 9 of Top 75 Global Tire Manufacturers in Year 2023
- Sale Revenue Reached USD4.2 Billion in Year 2022

Zhongce Rubber Group Co., Ltd (ZC RUBBER) is a global tire company based in Hangzhou, China and was founded in 1958. Over our more than 60 years of history, we experienced continuous growth in quality and reputation to become the Top 10 tire manufacturer worldwide today.

Our engineers with our international R&D team focus on constant technological development and innovation spending millions of US dollars in research and development each year and upgrading our production and testing facilities. The ET Industrial Brain in the production process promises our smart production and guarantee tires with high quality, safety, and value with maximum efficiency.

We have formed an extensive global service network of about 1,200 distributors with 250,000 sales locations in 160 countries. Our subsidiaries in Thailand, Germany, Brazil, and the United States serve customers without any difference in time and language. We are dedicated to better support our suppliers, distributors, and customers through a one-stop service.

Safe and Value are always the key of our company. We take pride in the superior quality of our tire products and the first-rate services. We are still endeavoring to become one of the most respected tire manufacturers globally and craft a better future with all partners and friends.



China Compulsory Certification



US DOT Certification



European E-MARK Certification



SNI Certification of Indonesia



BIS Certification of India



INMETRO Certification of Brazil





ZC Rubber America

ZC Rubber Brazil

ZC Rubber Europe

ZC Rubber Thailand

ZC Rubber Headquarter

- ZC Rubber Chaoyang
- ZC Rubber Jiande
- ZC Rubber Fuyang
- ZC Rubber Qingquan
- ZC Rubber Yonggu
- ZC Rubber Anji
- ZC Rubber Jintan
- ZC Rubber Recycle Tech Co., Ltd.



Pre-Strain Contour Theory (PSCT)

Minimized tire profile deformation



After more than 20 years of painstaking research, ZC Rubber TBR Research Center has finally successfully developed the Pre-strain Contour theory (PSCT) and four technologies derived from this theory with independent

intellectual property rights. In 2020, the newly launched ZC Rubber premium truck and bus tires based on the theories and technologies have been recognized by the market.

- Tire Simulation of Pre-stressing Force through FEA (Finite Elements Analysis)
- Simulation Iteration based on pre-set tire profile
- Minimized tire profile deformation when inflated

Pre-strain Contour Theory is a new truck and bus tire design theory developed by ZC Rubber. We conducted the simulation of real tire performance under different scenarios and conditions of various commercial vehicle

models. Based on the new theory and core technologies, the tire can achieve minimized profile deformation and heat generation when inflated and loaded, which greatly improves its tire life and overall performance.

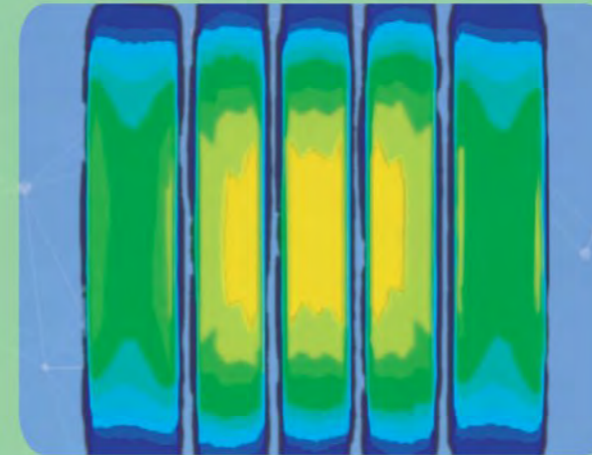
BTCT Belt Tension Control Technology (BTCT) - Enhanced tire life and durability

- Reduced shear force among steel belts
- Tension improved at the end of belts but reduced at the center
- Reduced deformation at the end of belts at high speed

BTCT means Belt Tension Control Technology. Based on PSCT, the shear force among steel belts is greatly reduced. It improves the tension at the end of belts but reduces the tension at the center, thus ensuring the minimized tire deformation at high speed. This features the crown with low heat generation and high strength, bringing a 20% improvement in durability and longer tire life.



PDOT Pressure Distribution Optimization Technology (PDOT) - Longer mileage and higher fuel economy



- Optimized Tire Footprint and Better Contact Pressure Distribution
- Rectangular Footprint Shape for Even Pressure Distribution
- Reduced Tire Slipping in Cornering
- Improved Tire Life and Fuel Economy

The pressure distribution of the tire footprint affects fuel consumption and treadwear. PDOT is used to optimize the tire footprint and improve the contact pressure distribution. In a straight-line driving, the footprint maintains a rectangular shape for even pressure distributions; when cornering, it reduces slipping between the tire and the ground. This improves your tire life and fuel economy.

GSCT Groove Strain-stress Control Technology (GSCT) - Less occurrence of groove cracking in driving

- Controllable Groove Pattern Shape When Inflated
- Uniform Distribution of Pattern Groove Bottom Stress for Lower Heat Generation
- Less Occurrence of Groove Cracking in Driving



Groove Strain-stress Control Technology can control the groove width change when the tire is inflated. This would reduce stress concentration in pattern groove bottom, thus reducing heat generation. It minimizes the occurrence of groove cracking and prolongs tire life.

SSHT Shoulder Stiffness Hold Technology (SSHT) - Less uneven wear

- Less Uneven Wear of Tire Better Tire Inflation Profile through PSCT
- Reinforced Tire Sidewall
- Optimized Tire Footprint, Improved Contact Pressure Distribution and Reduced Heat Generation of Sidewall Deformation
- Less Uneven Wear of Tire



Shoulder Stiffness Hold Technology brings the tire inflation profile closer to the design profile. It greatly strengthens the tire sidewall. Meanwhile, it optimizes tire footprints, improves contact pressure distributions, and reduces the heat generated by sidewall deformation. This technology cuts the chances of sidewall bubbles and solves the problem of tire uneven wear.

CONTENTS

ALL STEEL TRUCK & BUS RADIAL TIRES



Long Haul

09



Regional

14



Mixed Service

20



Winter

24



Warranty

26



LONG HAUL

Long distance journey with constant speed and less braking and accelerating

Less fuel consumption and comfortable ride

High mileage performance



- Wide base super single tire applicable for both steer and trailer service
- Computer designed tread structure provide even wear with less pressure on the road
- Long life tread compound with less heating enhance the original tread life
- Strong steel belt improves the casing durability and promote multiple retreads



This company manufactures:
 EPA SmartWay verified technologies
 and/or
 Verified equipment for SmartWay Designated Tractors
 Verified equipment for SmartWay Designated Trailers
 As a result, we assist SmartWay partners with meeting
 their goals of energy efficiency and emissions reductions.
 Learn more about ...
SmartWay
www.epa.gov/smartway

AT566

| SIZE | LR/PR | SERVICE INDEX | TREAD DEPTH 32nds | STANDARD RIM | OVERALL DIAMETER inch | SECTION WIDTH inch | MAX. LOAD CAPACITY AT COLD INFLATION PRESSURE | | | | | | | |
|-------------|-------|---------------|----------------------|--------------|--------------------------|-----------------------|---|-------|-----|-----|------|-----|-----|-----|
| | | | | | | | SINGLE | | | | DUAL | | | |
| | | | | | | | kg | lbs | kPa | psi | kg | lbs | kPa | psi |
| 445/50R22.5 | L/20 | 161L | 17 | 14.00 | 40.1 | 17.5 | 4625 | 10200 | 830 | 120 | - | - | - | - |



- Premium wide base drive tire suitable for long haul application.
- Robust tread blocks offer outstanding traction on both wet and dry road condition.
- Enhanced tire carcass guarantees lateral stability, longer mileage and easy retreadability



AD781

| SIZE | LR/PR | SERVICE INDEX | TREAD DEPTH 32nds | STANDARD RIM | OVERALL DIAMETER inch | SECTION WIDTH inch | MAX. LOAD CAPACITY AT COLD INFLATION PRESSURE | | | | | | | |
|-------------|-------|---------------|----------------------|--------------|--------------------------|-----------------------|---|-------|-----|-----|------|-----|-----|-----|
| | | | | | | | SINGLE | | | | DUAL | | | |
| | | | | | | | kg | lbs | kPa | psi | kg | lbs | kPa | psi |
| 445/50R22.5 | L/20 | 161L | 27 | 14.00 | 40.1 | 17.5 | 4625 | 10200 | 830 | 120 | - | - | - | - |



- Five ribs with four wide, straight grooves for precise handling and outstanding traction
- Decoupling tread design suitable for long-distance travel
- Applicable for steer and free-rolling wheel position



This company manufactures:
 - and/or -
 - Verified equipment for SmartWay Designated Tractors
 - Verified equipment for SmartWay Designated Trailers
 As a result, we assist SmartWay partners with meeting their goals of energy efficiency and emissions reductions.
 Learn more about ...
www.epa.gov/smartway

CR989

| SIZE | LR/PR | SERVICE INDEX | TREAD DEPTH 32nds | STANDARD RIM | OVERALL DIAMETER inch | SECTION WIDTH inch | MAX. LOAD CAPACITY AT COLD INFLATION PRESSURE | | | | | | | |
|-------------|-------|---------------|-------------------|--------------|-----------------------|--------------------|---|------|-----|-----|------|------|-----|-----|
| | | | | | | | SINGLE | | | | DUAL | | | |
| | | | | | | | kg | lbs | kPa | psi | kg | lbs | kPa | psi |
| 11R22.5 | G/14 | 144/142L | 18 | 8.25 | 41.5 | 11.0 | 2800 | 6175 | 720 | 105 | 2650 | 5840 | 720 | 105 |
| 11R22.5 | H/16 | 148/145M | 18 | 8.25 | 41.5 | 11.0 | 3150 | 6940 | 850 | 123 | 2900 | 6390 | 850 | 123 |
| 295/75R22.5 | G/14 | 144/141L | 18 | 9.00 | 39.9 | 11.7 | 2800 | 6175 | 760 | 110 | 2575 | 5675 | 760 | 110 |
| 11R24.5 | G/14 | 146/143L | 19 | 8.25 | 43.5 | 11.0 | 3000 | 6610 | 720 | 105 | 2725 | 6005 | 720 | 105 |
| 11R24.5 | H/16 | 149/146L | 19 | 8.25 | 43.5 | 11.0 | 3250 | 7160 | 830 | 120 | 3000 | 6610 | 830 | 120 |
| 285/75R24.5 | G/14 | 144/141L | 19 | 8.25 | 41.3 | 11.1 | 2800 | 6175 | 760 | 110 | 2575 | 5675 | 760 | 110 |



- Wide and deep tread helps to promote even wear and long tread life resulting in low cost per mile
- Solid close shoulder ribs help to improve even wear
- Three deep grooves evacuate water efficiently for traction
- Strong casing resists cuts and punctures for enhanced toughness and long casing life



This company manufactures:
 - and/or -
 - Verified equipment for SmartWay Designated Tractors
 - Verified equipment for SmartWay Designated Trailers
 As a result, we assist SmartWay partners with meeting their goals of energy efficiency and emissions reductions.
 Learn more about ...
www.epa.gov/smartway

CM983

| SIZE | LR/PR | SERVICE INDEX | TREAD DEPTH 32nds | STANDARD RIM | OVERALL DIAMETER inch | SECTION WIDTH inch | MAX. LOAD CAPACITY AT COLD INFLATION PRESSURE | | | | | | | |
|-------------|-------|---------------|-------------------|--------------|-----------------------|--------------------|---|------|-----|-----|------|------|-----|-----|
| | | | | | | | SINGLE | | | | DUAL | | | |
| | | | | | | | kg | lbs | kPa | psi | kg | lbs | kPa | psi |
| 11R22.5 | G/14 | 144/142L | 26 | 8.25 | 41.9 | 11.0 | 2800 | 6175 | 720 | 105 | 2650 | 5840 | 720 | 105 |
| 11R22.5 | H/16 | 148/145L | 26 | 8.25 | 41.9 | 11.0 | 3150 | 6940 | 850 | 123 | 2900 | 6390 | 850 | 123 |
| 295/75R22.5 | G/14 | 144/141L | 26 | 9.00 | 40.2 | 11.7 | 2800 | 6175 | 760 | 110 | 2575 | 5675 | 760 | 110 |
| 11R24.5 | G/14 | 146/143L | 26 | 8.25 | 43.9 | 11.0 | 3000 | 6610 | 720 | 105 | 2725 | 6005 | 720 | 105 |
| 11R24.5 | H/16 | 149/146L | 26 | 8.25 | 43.9 | 11.0 | 3250 | 7160 | 830 | 120 | 3000 | 6610 | 830 | 120 |
| 285/75R24.5 | G/14 | 144/141L | 26 | 8.25 | 41.6 | 11.1 | 2800 | 6175 | 760 | 110 | 2575 | 5675 | 760 | 110 |



New generation drive tire with latest ZC-Rubber PSCT technology for long haul application



- 4 zig-zag grooves provides improved traction in dry and wet conditions
- Optimized block design prevents retaining objects for improved damage resistance
- Wide shoulders provides stability and better performance for even wear
- Improved Shoulder lugs for optimal performance against wandering and reduces tread temperature



AD716

| SIZE | LR/PR | SERVICE INDEX | TREAD DEPTH 32nds | STANDARD RIM | OVERALL DIAMETER inch | SECTION WIDTH inch | MAX. LOAD CAPACITY AT COLD INFLATION PRESSURE | | | | | | | |
|-------------|-------|---------------|-------------------|--------------|-----------------------|--------------------|---|------|-----|-----|------|------|-----|-----|
| | | | | | | | SINGLE | | | | DUAL | | | |
| | | | | | | | kg | lbs | kPa | psi | kg | lbs | kPa | psi |
| 11R22.5 | H/16 | 148/145L | 26 | 8.25 | 41.9 | 11.0 | 3150 | 6940 | 850 | 123 | 2900 | 6390 | 850 | 123 |
| 295/75R22.5 | G/14 | 144/141L | 26 | 9.00 | 40.2 | 11.7 | 2800 | 6175 | 760 | 110 | 2575 | 5675 | 760 | 110 |
| 11R24.5 | H/16 | 149/146L | 26 | 8.25 | 43.9 | 11.0 | 3250 | 7160 | 830 | 120 | 3000 | 6610 | 830 | 120 |
| 285/75R24.5 | G/14 | 144/141L | 26 | 8.25 | 41.7 | 11.1 | 2800 | 6175 | 760 | 110 | 2575 | 5675 | 760 | 110 |



New generation trailer tire with latest ZC-Rubber PSCT technology for long haul application



- The linear 4-groove pattern offers straight drivability in all conditions
- Enhanced shoulder rib improves stability on the road
- Smooth lines at the edge of the grooves provide optimal footprint to help increase fuel efficiency
- Featuring lateral grooves and dimple siping, reflects contemporary trends in the long haul trailer application.



AT598

| SIZE | LR/PR | SERVICE INDEX | TREAD DEPTH 32nds | STANDARD RIM | OVERALL DIAMETER inch | SECTION WIDTH inch | MAX. LOAD CAPACITY AT COLD INFLATION PRESSURE | | | | | | | |
|-------------|-------|---------------|-------------------|--------------|-----------------------|--------------------|---|------|-----|-----|------|------|-----|-----|
| | | | | | | | SINGLE | | | | DUAL | | | |
| | | | | | | | kg | lbs | kPa | psi | kg | lbs | kPa | psi |
| 11R22.5 | G/14 | 144/142M | 14 | 8.25 | 41.5 | 11.0 | 2800 | 6175 | 720 | 105 | 2650 | 5840 | 720 | 105 |
| 295/75R22.5 | G/14 | 144/141L | 14 | 9.00 | 39.9 | 11.7 | 2800 | 6175 | 760 | 110 | 2575 | 5675 | 760 | 110 |



- Cool-running compound construction reduces the energy generated within the tread for low rolling resistance
- Shallow tread depth promotes low rolling resistance for fuel economy and long even wear
- Four wide grooves provide all-season performance on wet and dry roads



This company manufactures:
 EPA SmartWay verified technologies
 and/or
 Verified equipment for SmartWay Designated Tractors
 Verified equipment for SmartWay Designated Trailers
 As a result, we assist SmartWay partners with meeting
 their goals of energy efficiency and emissions reductions.
 Learn more about ...
SmartWay
www.epa.gov/smartway

CR915

| SIZE | LR/PR | SERVICE INDEX | TREAD DEPTH 32nds | STANDARD RIM | OVERALL DIAMETER inch | SECTION WIDTH inch | MAX. LOAD CAPACITY AT COLD INFLATION PRESSURE | | | | | | | |
|-------------|-------|---------------|-------------------|--------------|-----------------------|--------------------|---|------|-----|-----|------|------|-----|-----|
| | | | | | | | SINGLE | | | | DUAL | | | |
| | | | | | | | kg | lbs | kPa | psi | kg | lbs | kPa | psi |
| 11R22.5 | G/14 | 144/142M | 14 | 8.25 | 41.5 | 11.0 | 2800 | 6175 | 720 | 105 | 2650 | 5840 | 720 | 105 |
| 11R22.5 | H/16 | 148/145M | 14 | 8.25 | 41.5 | 11.0 | 3150 | 6940 | 850 | 123 | 2900 | 6390 | 850 | 123 |
| 295/75R22.5 | G/14 | 144/141M | 14 | 9.00 | 39.9 | 11.7 | 2800 | 6175 | 760 | 110 | 2575 | 5675 | 760 | 110 |



- Five ribs with four wide, straight grooves for precise handling and outstanding traction
- Stone rejector platforms prevent stones from lodging in grooves and drilling into belts
- Shallower tread depth helps to resist tread squirm and irregular wear forces for exceptionally long mileage



CR976A

| SIZE | LR/PR | SERVICE INDEX | TREAD DEPTH 32nds | STANDARD RIM | OVERALL DIAMETER inch | SECTION WIDTH inch | MAX. LOAD CAPACITY AT COLD INFLATION PRESSURE | | | | | | | |
|-------------|-------|---------------|-------------------|--------------|-----------------------|--------------------|---|-------|-----|-----|------|------|-----|-----|
| | | | | | | | SINGLE | | | | DUAL | | | |
| | | | | | | | kg | lbs | kPa | psi | kg | lbs | kPa | psi |
| 255/70R22.5 | H/16 | 140/137M | 18 | 7.50 | 36.6 | 10.0 | 2500 | 5510 | 830 | 120 | 2300 | 5070 | 830 | 120 |
| 275/70R22.5 | H/16 | 148/145M | 18 | 8.25 | 37.7 | 10.9 | 3150 | 6940 | 900 | 130 | 2900 | 6395 | 900 | 130 |
| 275/80R22.5 | H/16 | 149/146M | 18 | 8.25 | 39.8 | 10.9 | 3250 | 7165 | 850 | 123 | 3000 | 6610 | 850 | 123 |
| 385/65R22.5 | J/18 | 158L(160K) | 20 | 11.75 | 42.2 | 15.3 | 4250 | 9370 | 850 | 125 | - | - | - | - |
| 385/65R22.5 | L/20 | 160K(158L) | 20 | 11.75 | 42.2 | 15.3 | 4500 | 9920 | 900 | 130 | - | - | - | - |
| 425/65R22.5 | L/20 | 165K | 19 | 12.25 | 44.3 | 16.9 | 5150 | 11340 | 830 | 120 | - | - | - | - |
| 445/65R22.5 | L/20 | 169K | 19 | 13.00 | 45.3 | 17.5 | 5800 | 12775 | 900 | 130 | - | - | - | - |
| 11R22.5 | H/16 | 148/145M | 20 | 8.25 | 41.5 | 11.0 | 3150 | 6940 | 850 | 123 | 2900 | 6390 | 850 | 123 |
| 12R22.5 | J/18 | 152/149L | 20 | 9.00 | 42.7 | 11.8 | 3550 | 7830 | 930 | 135 | 3250 | 7160 | 930 | 135 |
| 295/80R22.5 | J/18 | 152/149M | 19 | 9.00 | 41.1 | 11.7 | 3550 | 7830 | 900 | 131 | 3250 | 7160 | 900 | 131 |
| 10.00R20 | H/16 | 146/143K | 19 | 7.5 | 41.5 | 10.9 | 3000 | 6610 | 830 | 120 | 2725 | 6005 | 830 | 120 |
| 10.00R20 | J/18 | 149/146J | 19 | 7.5 | 41.5 | 10.9 | 3250 | 7160 | 930 | 135 | 3000 | 6610 | 930 | 135 |
| 11.00R20 | J/18 | 152/149K | 20 | 8.0 | 42.7 | 11.5 | 3550 | 7825 | 930 | 135 | 3250 | 7165 | 930 | 135 |



REGIONAL

Shorter journey with frequent braking, accelerating and turning

Improved road grip with maximum mileage

Exceptional tough type



- Strong computer designed tire casing guarantees outstanding capacity for heavy loads and highway
- Special sipes alongside tread ribs help to minimize heating for high speed running with heavy loads
- Special tread compound provides higher fuel efficiency with lower rolling resistance without sacrificing tire mileage



WTX1

| SIZE | LR/PR | SERVICE INDEX | TREAD DEPTH 32nds | STANDARD RIM | OVERALL DIAMETER inch | SECTION WIDTH inch | MAX. LOAD CAPACITY AT COLD INFLATION PRESSURE | | | | | | | |
|-------------|-------|--------------------|----------------------|--------------|--------------------------|-----------------------|---|------|-----|-----|------|------|-----|-----|
| | | | | | | | SINGLE | | | | DUAL | | | |
| | | | | | | | kg | lbs | kPa | psi | kg | lbs | kPa | psi |
| 205/65R17.5 | J/18 | 129/127K(132/132F) | 15 | 6.00 | 28.0 | 8.1 | 1850 | 4080 | 900 | 131 | 1750 | 3860 | 900 | 131 |
| 215/75R17.5 | H/16 | 135/133J | 15 | 6.00 | 30.2 | 8.3 | 2180 | 4805 | 850 | 123 | 2060 | 4540 | 850 | 123 |
| 235/75R17.5 | H/16 | 143/141J(144/144F) | 15 | 6.75 | 31.4 | 9.2 | 2725 | 6005 | 875 | 128 | 2575 | 5675 | 875 | 128 |
| 245/70R17.5 | J/18 | 143/141J(146/146F) | 15 | 7.50 | 31.1 | 9.8 | 2725 | 6005 | 875 | 128 | 2575 | 5675 | 875 | 128 |
| 265/70R19.5 | J/18 | 143/141J | 15 | 7.50 | 34.1 | 10.3 | 2725 | 6005 | 850 | 123 | 2575 | 5675 | 850 | 123 |
| 285/70R19.5 | J/18 | 150/148J | 15 | 8.25 | 35.2 | 11.1 | 3350 | 7390 | 900 | 131 | 3150 | 6940 | 900 | 131 |



New generation steer/trailer tire with latest ZC-Rubber PSCT technology for regional application

- Four wide tread grooves allows excellent water drainage
- Multi siping provides outstanding traction on both dry and wet road surfaces
- Computer designed tire casing assures excellent footprint for extended tire life



AZ599

| SIZE | LR/PR | SERVICE INDEX | TREAD DEPTH 32nds | STANDARD RIM | OVERALL DIAMETER inch | SECTION WIDTH inch | MAX. LOAD CAPACITY AT COLD INFLATION PRESSURE | | | | | | | |
|-------------|-------|---------------|----------------------|--------------|--------------------------|-----------------------|---|------|-----|-----|------|------|-----|-----|
| | | | | | | | SINGLE | | | | DUAL | | | |
| | | | | | | | kg | lbs | kPa | psi | kg | lbs | kPa | psi |
| 215/75R17.5 | H/16 | 135/133J | 16 | 6.00 | 30.2 | 8.3 | 2180 | 4805 | 850 | 123 | 2060 | 4540 | 850 | 123 |
| 235/75R17.5 | H/16 | 143/141J | 16 | 6.75 | 31.4 | 9.2 | 2725 | 6005 | 875 | 128 | 2575 | 5675 | 875 | 128 |
| 225/70R19.5 | G/14 | 128/126N | 16 | 6.75 | 31.9 | 8.9 | 1800 | 3970 | 760 | 110 | 1700 | 3750 | 760 | 110 |
| 245/70R19.5 | H/16 | 136/134M | 18 | 7.50 | 33.0 | 9.8 | 2240 | 4940 | 830 | 120 | 2120 | 4675 | 830 | 120 |
| 11R22.5 | H/16 | 148/145L | 18 | 8.25 | 41.5 | 11.0 | 3150 | 6940 | 850 | 123 | 2900 | 6390 | 850 | 123 |
| 255/70R22.5 | H/16 | 140/137M | 18 | 7.50 | 36.6 | 10.0 | 2500 | 5510 | 830 | 120 | 2300 | 5070 | 830 | 120 |
| 275/70R22.5 | H/16 | 148/145L | 18 | 8.25 | 37.7 | 10.9 | 3150 | 6940 | 900 | 130 | 2900 | 6395 | 900 | 130 |
| 295/75R22.5 | G/14 | 144/141L | 18 | 9.00 | 39.9 | 11.7 | 2800 | 6175 | 760 | 110 | 2575 | 5675 | 760 | 110 |
| 315/80R22.5 | J/18 | 154/151M | 19 | 9.00 | 42.4 | 12.3 | 3750 | 8270 | 830 | 120 | 3450 | 7610 | 830 | 120 |
| 11R24.5 | H/16 | 149/146L | 18 | 8.25 | 43.5 | 11.0 | 3250 | 7160 | 830 | 120 | 3000 | 6610 | 830 | 120 |
| 285/75R24.5 | G/14 | 144/141L | 18 | 8.25 | 41.1 | 11.1 | 2800 | 6175 | 760 | 110 | 2575 | 5675 | 760 | 110 |



- Improved close shoulder helps to improve even wear resulting in long tread life
- Straight simple rib pattern improves even wearing and efficient water evacuation for excellent wet traction and handling
- Cross rib sipes slice through water for solid control on wet roads



This company manufactures:
EPA SmartWay verified technologies and/or verified equipment for SmartWay Designated Tractors and SmartWay Designated Trailers.
As a result, we assist SmartWay partners with meeting their goals of energy efficiency and emissions reductions.
Learn more about ...
SmartWay
www.epa.gov/smartway

CR960A

| SIZE | LR/PR | SERVICE INDEX | TREAD DEPTH 32nds | STANDARD RIM | OVERALL DIAMETER inch | SECTION WIDTH inch | MAX. LOAD CAPACITY AT COLD INFLATION PRESSURE | | | | | | | |
|-------------|-------|---------------|----------------------|--------------|--------------------------|-----------------------|---|------|-----|-----|------|------|-----|-----|
| | | | | | | | SINGLE | | | | DUAL | | | |
| | | | | | | | kg | lbs | kPa | psi | kg | lbs | kPa | psi |
| 11R22.5 | G/14 | 144/142L | 18 | 8.25 | 41.5 | 11.0 | 2800 | 6175 | 720 | 105 | 2650 | 5840 | 720 | 105 |
| 11R22.5 | H/16 | 148/145M | 18 | 8.25 | 41.5 | 11.0 | 3150 | 6940 | 850 | 123 | 2900 | 6390 | 850 | 123 |
| 295/75R22.5 | G/14 | 144/141L | 18 | 9.00 | 39.9 | 11.7 | 2800 | 6175 | 760 | 110 | 2575 | 5675 | 760 | 110 |
| 11R24.5 | G/14 | 146/143L | 18 | 8.25 | 43.5 | 11.0 | 3000 | 6610 | 720 | 105 | 2725 | 6005 | 720 | 105 |
| 11R24.5 | H/16 | 149/146L | 18 | 8.25 | 43.5 | 11.0 | 3250 | 7160 | 830 | 120 | 3000 | 6610 | 830 | 120 |
| 285/75R24.5 | G/14 | 144/141L | 18 | 8.25 | 41.3 | 11.1 | 2800 | 6175 | 760 | 110 | 2575 | 5675 | 760 | 110 |
| 215/75R17.5 | H/16 | 135/133J | 16 | 6.00 | 30.2 | 8.3 | 2180 | 4805 | 850 | 123 | 2060 | 4540 | 850 | 123 |
| 235/75R17.5 | H/16 | 143/141J | 17 | 6.75 | 31.4 | 9.2 | 2725 | 6005 | 875 | 128 | 2575 | 5675 | 875 | 128 |
| 225/70R19.5 | G/14 | 128/126N | 16 | 6.75 | 31.9 | 8.9 | 1800 | 3970 | 760 | 110 | 1700 | 3750 | 760 | 110 |
| 245/70R19.5 | H/16 | 136/134M | 16 | 7.50 | 33.0 | 9.8 | 2240 | 4940 | 830 | 120 | 2120 | 4675 | 830 | 120 |
| 265/70R19.5 | J/18 | 143/141J | 18 | 7.50 | 34.1 | 10.3 | 2725 | 6005 | 850 | 123 | 2575 | 5675 | 850 | 123 |
| 285/70R19.5 | H/16 | 146/144K | 18 | 8.25 | 35.2 | 11.1 | 3000 | 6610 | 850 | 123 | 2800 | 6175 | 850 | 123 |
| 315/70R22.5 | L/20 | 156/150L | 19 | 9.00 | 39.9 | 12.3 | 4000 | 8820 | 900 | 130 | 3350 | 7390 | 900 | 130 |



New generation drive tire with latest ZC-Rubber PSCT technology for regional application

- Zigzag grooves and open shoulder provides ideal performance for traction
- Optimized block size prevents irregular wear
- Deeper groove and wider tread provide longer tread life in all weather conditions
- Unique tread design decreases stone retention



AD721

| SIZE | LR/PR | SERVICE INDEX | TREAD DEPTH 32nds | STANDARD RIM | OVERALL DIAMETER inch | SECTION WIDTH inch | MAX. LOAD CAPACITY AT COLD INFLATION PRESSURE | | | | | | | |
|-------------|-------|---------------|----------------------|--------------|--------------------------|-----------------------|---|------|-----|-----|------|------|-----|-----|
| | | | | | | | SINGLE | | | | DUAL | | | |
| | | | | | | | kg | lbs | kPa | psi | kg | lbs | kPa | psi |
| 11R22.5 | H/16 | 146/143L | 26 | 8.25 | 41.9 | 11.0 | 3000 | 6610 | 830 | 120 | 2725 | 6005 | 830 | 120 |
| 295/75R22.5 | G/14 | 144/141L | 26 | 9.00 | 40.2 | 11.7 | 2800 | 6175 | 760 | 110 | 2575 | 5675 | 760 | 110 |
| 11R24.5 | H/16 | 149/146L | 26 | 8.25 | 43.9 | 11.0 | 3250 | 7160 | 830 | 120 | 3000 | 6610 | 830 | 120 |



- Wide and deep tread enhances cost per mileage, driving stability and traction on highway application
- Aggressive traction blocks helps to increase wet traction
- Strong open shoulder produces powerful traction
- Suitable for single axle vehicles



This company manufactures:
 EPA SmartWay-verified technologies
 and/or
 verified equipment for SmartWay Designated Tractors
 and SmartWay Designated Trailers
 As a result, we assist SmartWay partners with meeting
 their goals of energy efficiency and emissions reductions.
 Learn more about ...
www.epa.gov/smartway



CM980

| SIZE | LR/PR | SERVICE INDEX | TREAD DEPTH 32nds | STANDARD RIM | OVERALL DIAMETER inch | SECTION WIDTH inch | MAX. LOAD CAPACITY AT COLD INFLATION PRESSURE | | | | | | | |
|-------------|-------|---------------|-------------------|--------------|-----------------------|--------------------|---|------|-----|-----|------|------|-----|-----|
| | | | | | | | SINGLE | | | | DUAL | | | |
| | | | | | | | kg | lbs | kPa | psi | kg | lbs | kPa | psi |
| 11R22.5 | G/14 | 144/142L | 26 | 8.25 | 41.9 | 11.0 | 2800 | 6175 | 720 | 105 | 2650 | 5840 | 720 | 105 |
| 11R22.5 | H/16 | 148/145L | 26 | 8.25 | 41.9 | 11.0 | 3150 | 6940 | 850 | 123 | 2900 | 6390 | 850 | 123 |
| 295/75R22.5 | G/14 | 144/141L | 26 | 9.00 | 40.2 | 11.7 | 2800 | 6175 | 760 | 110 | 2575 | 5675 | 760 | 110 |
| 11R24.5 | G/14 | 146/143L | 26 | 8.25 | 43.9 | 11.0 | 3000 | 6610 | 720 | 105 | 2725 | 6005 | 720 | 105 |
| 11R24.5 | H/16 | 149/146L | 26 | 8.25 | 43.9 | 11.0 | 3250 | 7160 | 830 | 120 | 3000 | 6610 | 830 | 120 |
| 285/75R24.5 | G/14 | 144/141L | 26 | 8.25 | 41.6 | 11.1 | 2800 | 6175 | 760 | 110 | 2575 | 5675 | 760 | 110 |



New generation pickup drive tire with latest ZC-Rubber PSCT technology for regional application

- 6-interlocking tread blocks and a symmetrical design engineered to promote even wear throughout the tire's life
- Tapered lateral grooves make the S737 a performer in all-weather applications
- Integrated tie bars reduce irregular wear and supports increased stability
- Angled lug and siping design improves overall traction and wet grip



AD717

| SIZE | LR/PR | SERVICE INDEX | TREAD DEPTH 32nds | STANDARD RIM | OVERALL DIAMETER inch | SECTION WIDTH inch | MAX. LOAD CAPACITY AT COLD INFLATION PRESSURE | | | | | | | |
|-------------|-------|---------------|-------------------|--------------|-----------------------|--------------------|---|------|-----|-----|------|------|-----|-----|
| | | | | | | | SINGLE | | | | DUAL | | | |
| | | | | | | | kg | lbs | kPa | psi | kg | lbs | kPa | psi |
| 225/70R19.5 | G/14 | 128/126N | 20 | 6.75 | 31.9 | 8.9 | 1800 | 3970 | 760 | 110 | 1700 | 3750 | 760 | 110 |
| 245/70R19.5 | H/16 | 136/134M | 20 | 7.50 | 33.0 | 9.8 | 2240 | 4940 | 830 | 120 | 2120 | 4675 | 830 | 120 |

- Traction block tread design for high drive wheel efficiency in all seasons
- Aggressive blading helps provide road-gripping traction
- Open shoulder produces powerful traction on wet and dry roads



CM986

| SIZE | LR/PR | SERVICE INDEX | TREAD DEPTH 32nds | STANDARD RIM | OVERALL DIAMETER inch | SECTION WIDTH inch | MAX. LOAD CAPACITY AT COLD INFLATION PRESSURE | | | | | | | |
|-------------|-------|---------------|-------------------|--------------|-----------------------|--------------------|---|------|-----|-----|------|------|-----|-----|
| | | | | | | | SINGLE | | | | DUAL | | | |
| | | | | | | | kg | lbs | kPa | psi | kg | lbs | kPa | psi |
| 215/75R17.5 | H/16 | 135/133J | 18 | 6.00 | 30.2 | 8.3 | 2180 | 4805 | 850 | 123 | 2060 | 4540 | 850 | 123 |
| 235/75R17.5 | H/16 | 143/141J | 19 | 6.75 | 31.4 | 9.2 | 2725 | 6005 | 875 | 128 | 2575 | 5675 | 875 | 128 |
| 225/70R19.5 | G/14 | 128/126 N | 19 | 6.75 | 31.9 | 8.9 | 1800 | 3970 | 760 | 110 | 1700 | 3750 | 760 | 110 |
| 245/70R19.5 | H/16 | 136/134M | 19 | 7.50 | 33.0 | 9.8 | 2240 | 4940 | 830 | 120 | 2120 | 4675 | 830 | 120 |
| 285/70R19.5 | H/16 | 146/144K | 20 | 8.25 | 35.2 | 11.1 | 3000 | 6610 | 850 | 123 | 2800 | 6175 | 850 | 123 |

- Special drive pattern with open shoulder provides good traction in wet and dry roads
- Durable tire casing enhances tire life



CM954

| SIZE | LR/PR | SERVICE INDEX | TREAD DEPTH 32nds | STANDARD RIM | OVERALL DIAMETER inch | SECTION WIDTH inch | MAX. LOAD CAPACITY AT COLD INFLATION PRESSURE | | | | | | | |
|----------|-------|---------------|-------------------|--------------|-----------------------|--------------------|---|------|-----|-----|------|------|-----|-----|
| | | | | | | | SINGLE | | | | DUAL | | | |
| | | | | | | | kg | lbs | kPa | psi | kg | lbs | kPa | psi |
| 10.00R20 | J/18 | 149/146J | 20 | 7.5 | 41.5 | 10.9 | 3250 | 7160 | 930 | 135 | 3000 | 6610 | 930 | 135 |
| 11R22.5 | H/16 | 148/145M | 20 | 8.25 | 41.5 | 11.0 | 3150 | 6940 | 850 | 123 | 2900 | 6390 | 850 | 123 |



- Wide and deep tread enhances cost per mileage, driving stability and traction on highway application
- Open shoulder blocks improve traction on dry and wet road surface
- High blade density of tread design helps to provide even wearing
- Suitable for single axle vehicles



CM985

| SIZE | LR/PR | SERVICE INDEX | TREAD DEPTH 32nds | STANDARD RIM | OVERALL DIAMETER inch | SECTION WIDTH inch | MAX. LOAD CAPACITY AT COLD INFLATION PRESSURE | | | | | | | |
|----------|-------|---------------|----------------------|--------------|--------------------------|-----------------------|---|------|-----|-----|------|------|-----|-----|
| | | | | | | | SINGLE | | | | DUAL | | | |
| | | | | | | | kg | Lbs | kPa | psi | kg | Lbs | kPa | psi |
| 10.00R20 | J/18 | 149/146J | 24 | 7.5 | 41.5 | 10.9 | 3250 | 7160 | 930 | 135 | 3000 | 6610 | 930 | 135 |
| 12R22.5 | J/18 | 152/149L | 28 | 9.00 | 43.1 | 11.8 | 3550 | 7830 | 930 | 135 | 3250 | 7160 | 930 | 135 |



MIXED SERVICE

Used both on and off road
 Heavy loads and outstanding durability
 Special protection against the damage caused by the road condition



Mixed Service



New generation steer/trailer tire with latest ZC-Rubber PSCT technology for mixed service application

- Updated tread design for improved driving stability and uneven tread wear
- Open shoulder and multiple gripping edges provides excellent traction performance in on and off road conditions
- Stone ejector in the middle of grooves to assist in prevention of stone drilling
- Special tread compounds to resist chipping, chunking and tearing



AZ579

| SIZE | LR/PR | SERVICE INDEX | TREAD DEPTH 32nds | STANDARD RIM | OVERALL DIAMETER inch | SECTION WIDTH inch | MAX. LOAD CAPACITY AT COLD INFLATION PRESSURE | | | | | | | |
|-------------|-------|---------------|-------------------|--------------|-----------------------|--------------------|---|------|-----|-----|------|------|-----|-----|
| | | | | | | | SINGLE | | | | DUAL | | | |
| | | | | | | | kg | Lbs | kPa | psi | kg | Lbs | kPa | psi |
| 11R22.5 | H/16 | 146/143L | 21 | 8.25 | 41.5 | 11.0 | 3000 | 6610 | 830 | 120 | 2725 | 6005 | 830 | 120 |
| 255/70R22.5 | H/16 | 140/137M | 18 | 7.50 | 36.6 | 10.0 | 2500 | 5510 | 830 | 120 | 2300 | 5070 | 830 | 120 |
| 315/80R22.5 | L/20 | 157/154K | 21 | 9.00 | 42.4 | 12.3 | 4125 | 9090 | 900 | 130 | 3750 | 8270 | 900 | 130 |
| 11R24.5 | H/16 | 149/146L | 21 | 8.25 | 43.5 | 11.0 | 3250 | 7160 | 830 | 120 | 3000 | 6610 | 830 | 120 |



New generation steer/trailer tire with latest ZC-Rubber PSCT technology for mixed service application

- Notched circumferential grooves provide on/off road traction
- Stone ejector in all grooves with a heavy duty casing for retreadability
- Expanded groove width for enhanced traction performance
- Tie bars between each block prevents irregular wear
- Special tread compounds to resist chipping, chunking and tearing



AZ577

| SIZE | LR/PR | SERVICE INDEX | TREAD DEPTH 32nds | STANDARD RIM | OVERALL DIAMETER inch | SECTION WIDTH inch | MAX. LOAD CAPACITY AT COLD INFLATION PRESSURE | | | | | | | |
|-------------|-------|---------------|-------------------|--------------|-----------------------|--------------------|---|------|-----|-----|------|-----|-----|-----|
| | | | | | | | SINGLE | | | | DUAL | | | |
| | | | | | | | kg | Lbs | kPa | psi | kg | Lbs | kPa | psi |
| 385/65R22.5 | L/20 | 160K | 23 | 11.75 | 42.2 | 11.4 | 4500 | 9920 | 900 | 130 | - | - | - | - |

All Steel Truck & Bus Radial Tires



- Aggressive multi-service, all position tread pattern promises excellent traction in ON/OFF road service
- Outstanding self-cleaning tread design ensures long-life service in ON/OFF road conditions
- Robust tread blocks and rugged casing allows for heavy loads and resist casing penetration and damage



AT557

| SIZE | LR/PR | SERVICE INDEX | TREAD DEPTH 32nds | STANDARD RIM | OVERALL DIAMETER inch | SECTION WIDTH inch | MAX. LOAD CAPACITY AT COLD INFLATION PRESSURE | | | | | | | |
|-------------|-------|---------------|-------------------|--------------|-----------------------|--------------------|---|-------|-----|-----|------|------|-----|-----|
| | | | | | | | SINGLE | | | | DUAL | | | |
| | | | | | | | kg | Lbs | kPa | psi | kg | Lbs | kPa | psi |
| 255/70R22.5 | H/16 | 140/137L | 22 | 7.50 | 36.9 | 10.0 | 2500 | 5510 | 830 | 120 | 2300 | 5070 | 830 | 120 |
| 275/70R22.5 | H/16 | 148/145L | 23 | 8.25 | 37.7 | 10.9 | 3150 | 6940 | 900 | 130 | 2900 | 6395 | 900 | 130 |
| 385/65R22.5 | J/18 | 158L(160K) | 23 | 11.75 | 42.2 | 15.3 | 4250 | 9370 | 850 | 125 | - | - | - | - |
| 385/65R22.5 | L/20 | 160K(158L) | 23 | 11.75 | 42.2 | 15.3 | 4500 | 9920 | 900 | 130 | - | - | - | - |
| 425/65R22.5 | L/20 | 165K | 23 | 12.25 | 44.3 | 16.9 | 5150 | 11340 | 830 | 120 | - | - | - | - |
| 445/65R22.5 | L/20 | 169K | 23 | 13.00 | 45.3 | 17.5 | 5800 | 12775 | 900 | 130 | - | - | - | - |



- Aggressive lug design with large blocks at tread center provides excellent traction and braking on rough roads with mud or gravel and is self-cleaning for ease of maintenance
- Applicable in mining, logging, construction or rock and quarry operations with some very short on high-way use possible
- Special tread compounds resist chipping and chunking in rugged off-road conditions



CB972/E

| SIZE | LR/PR | SERVICE INDEX | TREAD DEPTH 32nds | STANDARD RIM | OVERALL DIAMETER inch | SECTION WIDTH inch | MAX. LOAD CAPACITY AT COLD INFLATION PRESSURE | | | | | | | |
|------------------|-------|---------------|-------------------|--------------|-----------------------|--------------------|---|------|-----|-----|------|------|-----|-----|
| | | | | | | | SINGLE | | | | DUAL | | | |
| | | | | | | | kg | Lbs | kPa | psi | kg | Lbs | kPa | psi |
| 11R22.5 | H/16 | 148/145J | 29 | 8.25 | 41.9 | 11.0 | 3150 | 6940 | 850 | 123 | 2900 | 6390 | 850 | 123 |
| 11R24.5 | H/16 | 149/146F | 29 | 8.25 | 43.9 | 11.0 | 3250 | 7160 | 830 | 120 | 3000 | 6610 | 830 | 120 |
| 10.00R20 | J/18 | 149/146F | 30 | 7.5 | 41.9 | 10.9 | 3250 | 7160 | 930 | 135 | 3000 | 6610 | 930 | 135 |
| 11.00R20 | J/18 | 152/149F | 31 | 8.0 | 43.1 | 11.5 | 3550 | 7825 | 930 | 135 | 3250 | 7165 | 930 | 135 |
| 12.00R24(CB972E) | L/20 | 160/157C | 40 | 8.5 | 48.7 | 12.4 | 4500 | 9920 | 900 | 131 | 4125 | 9090 | 900 | 131 |
| 295/80R22.5 | J/18 | 152/149J | 26 | 9.00 | 41.3 | 11.7 | 3550 | 7830 | 900 | 131 | 3250 | 7160 | 900 | 131 |



Mixed Service



CR926/B/D

| SIZE | LR/PR | SERVICE INDEX | TREAD DEPTH 32nds | STANDARD RIM | OVERALL DIAMETER inch | SECTION WIDTH inch | MAX. LOAD CAPACITY AT COLD INFLATION PRESSURE | | | | | | | |
|---------------------|-------|--------------------|----------------------|--------------|--------------------------|-----------------------|---|------|-----|-----|------|------|-----|-----|
| | | | | | | | SINGLE | | | | DUAL | | | |
| | | | | | | | kg | lbs | kPa | psi | kg | lbs | kPa | psi |
| 11R22.5(CR926D) | H/16 | 148/145M | 21 | 8.25 | 41.5 | 11.0 | 3150 | 6940 | 850 | 123 | 2900 | 6390 | 850 | 123 |
| 11R24.5(CR926D) | H/16 | 149/146L | 21 | 8.25 | 43.5 | 11.0 | 3250 | 7160 | 830 | 120 | 3000 | 6610 | 830 | 120 |
| 255/70R22.5(CR926D) | H/16 | 140/137L | 18 | 7.50 | 36.6 | 10.0 | 2500 | 5510 | 830 | 120 | 2300 | 5070 | 830 | 120 |
| 295/80R22.5(CR926D) | H/16 | 150/147M | 20 | 9.00 | 41.1 | 11.7 | 3350 | 7390 | 830 | 120 | 3075 | 6780 | 830 | 120 |
| 295/80R22.5(CR926D) | J/18 | 152/149L | 20 | 9.00 | 41.1 | 11.7 | 3550 | 7830 | 900 | 131 | 3250 | 7160 | 900 | 131 |
| 315/80R22.5(CR926B) | J/18 | 154/151M(156/150L) | 21 | 9.00 | 42.4 | 12.3 | 3750 | 8270 | 830 | 120 | 3450 | 7610 | 830 | 120 |
| 315/80R22.5(CR926B) | L/20 | 157/154K | 21 | 9.00 | 42.4 | 12.3 | 4125 | 9090 | 900 | 130 | 3750 | 8270 | 900 | 130 |
| 7.50R16(CR926) | G/14 | 122/118L | 15 | 6.00G | 31.7 | 8.5 | 1500 | 3305 | 770 | 112 | 1320 | 2910 | 770 | 112 |
| 10.00R20(CR926) | J/18 | 149/146J | 20 | 7.5 | 41.5 | 10.9 | 3250 | 7160 | 930 | 135 | 3000 | 6610 | 930 | 135 |
| 11.00R20(CR926) | J/18 | 152/149K | 20 | 8.0 | 42.7 | 11.5 | 3550 | 7825 | 930 | 135 | 3250 | 7165 | 930 | 135 |
| 12.00R20(CR926) | J/18 | 154/151K | 22 | 8.5 | 44.3 | 12.4 | 3750 | 8270 | 830 | 120 | 3450 | 7610 | 830 | 120 |
| 12.00R24(CR926B) | L/20 | 160/157K | 24 | 8.5 | 48.3 | 12.4 | 4500 | 9920 | 900 | 131 | 4125 | 9090 | 900 | 131 |
| 12R22.5(CR926) | J/18 | 152/149L | 20 | 9.00 | 42.7 | 11.8 | 3550 | 7830 | 930 | 135 | 3250 | 7160 | 930 | 135 |
| 13R22.5(CR926) | J/18 | 156/151K | 20 | 9.75 | 44.3 | 12.6 | 4000 | 8820 | 875 | 128 | 3450 | 7610 | 875 | 128 |

- 3 circumferential grooves ensures good directional stability, even wear and smooth ride
- Heavy siping provides good braking stability and high lateral traction on wet and dry surface
- Improved tread compound helps resist tears and ensure good mileage in on and off road use
- Sidewall reinforcing ribs protects against impacts and scuffing



Contribute to safety and operating in winter conditions
 Outstanding grip performance on ice and snow road surface
 Stable handling during braking and turning



Winter



- Strong biting edges guarantee excellent traction on dry and slippery road surface, especially in winter
- Specific tread compound offer good mileage without scarifying wet traction
- Wide open shoulder deliver additional traction without compromising tread life



NZ782

| SIZE | LR/PR | SERVICE INDEX | TREAD DEPTH 32nds | STANDARD RIM | OVERALL DIAMETER inch | SECTION WIDTH inch | MAX. LOAD CAPACITY AT COLD INFLATION PRESSURE | | | | | | | |
|---------|-------|---------------|----------------------|--------------|--------------------------|-----------------------|---|------|-----|-----|------|------|-----|-----|
| | | | | | | | SINGLE | | | | DUAL | | | |
| | | | | | | | kg | lbs | kPa | psi | kg | lbs | kPa | psi |
| 11R22.5 | H/16 | 148/145L | 25 | 8.25 | 41.5 | 11.0 | 3150 | 6940 | 850 | 123 | 2900 | 6390 | 850 | 123 |
| 11R24.5 | H/16 | 149/146L | 26 | 8.25 | 43.9 | 11.0 | 3250 | 7160 | 830 | 120 | 3000 | 6610 | 830 | 120 |



- Wide tread provide stability while improving handling on wet and snowy road
- Extra deep tread depth provide long original tread life
- Open shoulder grooves deliver additional traction without compromising tread life
- 3D siping provide excellent traction and braking



NZ788

| SIZE | LR/PR | SERVICE INDEX | TREAD DEPTH 32nds | STANDARD RIM | OVERALL DIAMETER inch | SECTION WIDTH inch | MAX. LOAD CAPACITY AT COLD INFLATION PRESSURE | | | | | | | |
|---------|-------|---------------|----------------------|--------------|--------------------------|-----------------------|---|------|-----|-----|------|------|-----|-----|
| | | | | | | | SINGLE | | | | DUAL | | | |
| | | | | | | | kg | lbs | kPa | psi | kg | lbs | kPa | psi |
| 11R22.5 | G/14 | 144/142L | 27 | 8.25 | 41.9 | 11.0 | 2800 | 6175 | 720 | 105 | 2650 | 5840 | 720 | 105 |
| 11R22.5 | H/16 | 148/145L | 27 | 8.25 | 41.9 | 11.0 | 3150 | 6940 | 850 | 123 | 2900 | 6390 | 850 | 123 |
| 11R24.5 | G/14 | 146/143L | 27 | 8.25 | 43.9 | 11.0 | 3000 | 6610 | 720 | 105 | 2725 | 6005 | 720 | 105 |
| 11R24.5 | H/16 | 149/146L | 27 | 8.25 | 43.9 | 11.0 | 3250 | 7160 | 830 | 120 | 3000 | 6610 | 830 | 120 |



WARRANTY



LIMITED FREE REPLACEMENT WARRANTY

Zhongce Rubber Group Co., Ltd. warrants to the original purchaser that every new radial truck tire bearing the brand of "CHAOYANG", "GOODRIDE", "WESTLAKE" and "YARTU" will be free from defects in materials and workmanship. This warranty is limited to FIVE (5) years from the original date of manufacture. Any tire adjusted utilizing this limited free replacement warranty will be replaced at no charge if the tire fails during the first 2/32nds of an inch of original tread depth, due to a defect in materials and/or workmanship. This warranty is limited to the respective usable original tread depth, which is the original tread depth reduced by the Tread Wearing Index (TWI) depth.

TERMS & CONDITIONS

- All radial truck tire warranties are limited to the original purchaser and the original vehicle on which they were mounted and are not assignable to subsequent purchasers or vehicles. Original receipts must accompany all claims.
- Zhongce Rubber Group Co., Ltd. warrants that every new radial truck tire in the brand of "CHAOYANG", "GOODRIDE", "WESTLAKE" and "YARTU" sold by Hangzhou Zhongce Rubber Co., Ltd. in the United States will be free of defects in workmanship and/or materials.
- The cost of mounting, balancing and any other charges by the dealer in connection with the replacement of the tire are required to be paid by the purchaser. The purchaser is also required to pay all applicable Federal, State/Provincial and local taxes.
- What is not covered:
Exclusions this limited warranty does not apply to tire failures from:
 - Road Hazards (ie: punctures, snag, cut, impact breaks, etc)
 - Misalignment
 - Improper inflation
 - Wreck
 - Collision
 - Theft
 - Fire
 - Willful abuse
 - Claims for ozone or weather cracks during original tread life on tires more than 3 years from date of manufacture
 - Mechanical defects (such as brakes, shocks, worn steering and/or suspension parts, rim, etc..)
 - Vandalism
 - Overload
 - Use of improper rim
 - Improper mounting/dismounting
 - Chemical contamination
 - Misuse/Misapplication

NOR DOES THIS LIMITED WARRANTY APPLY TO ANY RADIAL TRUCK TIRES:

- With the serial # buffed or cut
- Marked blemish or NA (No Adjustment)
- Purchased or used outside the United States
- With remaining tread in any groove equal or less than Tread Wearing Index (TWI) depth
- With a ride complaint that occurs after the first 2/32nds of tread wear
- Retreaded with less than TWI depth of an inch of tread

Truck Tire Casings will be warranted against defects in material and/or workmanship through 100% of the first retread for a period of five years from the date of manufacture.

The following casing allowance will be applied to truck tires in the brands of "CHAOYANG", "GOODRIDE", "WESTLAKE" and "YARTU" in normal over the road service and manufactured after July 1, 2010. For CR915 trailer application, the casing will be warranted through the first and second retread for a period of five years from the date of manufacture.

| Size | Casing Allowance |
|------------------------------|------------------|
| LIGHT TRUCK | |
| 8.5, 9.5R17.5 | \$15.00 |
| 8R19.5 | \$15.00 |
| TUBELESS MEDIUM TRUCK | |
| 8, 9, 10R22.5 | \$35.00 |
| 11, 12R22.5 | \$50.00 |
| 11R24.5, 13R22.5 | \$50.00 |
| TUBELESS LOW PROFILE | |
| 205, 215, 225, 235/75R17.5 | \$20.00 |
| 225, 245, 265/70R19.5 | \$25.00 |
| 255, 275/70R22.5 | \$50.00 |
| 295/75R22.5 | \$50.00 |
| 295/80R22.5 | \$50.00 |
| 315/80R22.5 | \$50.00 |
| 385, 425, 445/65R22.5 | \$60.00 |
| 445/50R22.5 | \$75.00 |
| 285/75R24.5 | \$50.00 |
| TUBE TYPE | |
| 10.00R20 | \$35.00 |

PURCHASER OBLIGATIONS

In order to be eligible for the limited warranty service, the purchaser must:

- Present the defective tire to an authorized dealer from whom the original purchase was made.
- Present proof of purchase to the satisfaction of the dealer.
- Complete and sign a warranty claim form which is available at any authorized dealer.
- Retain and present the warranty card along with proof of date and place of purchase in order to make a claim. The authorized dealer's name and address from whom the tires were purchased must be also included on the warranty form.
- At the time of purchase the tire(s) must be properly installed with proper air pressure and the wheels balanced.

DISCLAIMER

This warranty or any warranty stated or referred to herein, is exclusive and in lieu of any other warranty regarding the quality of the tires, whether expressed or implied and remedies for breach thereof shall be limited to those specifically provided herein.



www.westlaketyre.com



www.facebook.com/westlaketyreglobal



ZC RUBBER AMERICA INC.

661 Brea Canyon Rd. Suite 7 Walnut, CA 91789
Tel: 909-598-5585 Toll Free: 855-924-5678 Fax: 909-598-5587
Info@zcrubberamerica.com



zc-rubber.com



facebook.com/zcrubber



twitter.com/zc_rubber



linkedin.com/company/zcrubber