

E-MOBILITY IS COMING YOUR WAY

ZuperAce EV ⚡

WEST LAKE



Silence with Zuper
Silent Technology



Super
Traction



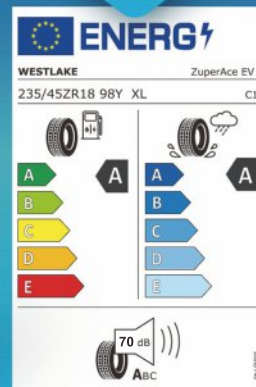
Fuel Efficiency
with Zuper Green
Technology



Elegant
Appearance



AAA
EU Tyre
Label



About ZC Rubber



TOP 9

No. 9 of Top 75 Global
Tire Manufacturers



30,000 EMPLOYEES

Support from Over 30,000
Employees



SINCE 1958

Established in Year 1958



200 MARKETS

Trust from Customers across
More than 200 Markets

Development Milestones of ZC Rubber



1992

Renamed as Hangzhou
Zhongce Rubber Co., Ltd.



2013

Renamed as
Zhongce Rubber Group Co., Ltd.



2014

Establishment of
Brazil branch



2015

Establishment of Hangzhou
ZC Rubber Auto Space Co.,Ltd



2021

Establishment of Europe
Technical Center



1958

Establishment of Haichao
Rubber Factory



2012

Listed as Top 10 of the world tire
manufactures since 2012



2013

Establishment of
American branch



2015

Foundation of Zhongce
Rubber (Thailand) Co., Ltd.



2016

Establishment of
Europe branch



2024

Foundation of
ZC Rubber Indonesia

Top 10 Global Tire Company

2023 GLOBAL TIRE COMPANY RANKINGS (38th Global Tire Report Released by Tire Business)

Based on 2022 results. Includes subsidiaries. (Figures in millions of dollars, translated at average annual currency exchange rates)

			2022		2021		2020		2019	
2022 Rank	2021 Rank	Company / Headquarters	Tire Sales	% of total corp.sales	Tire Sales	% of total corp.sales	Tire Sales	% of total corp.sales	Tire Sales	% of total corp.sales
1	1	Group Michelin <i>Clermont-Ferrand, France</i>	*28,260.0	*94.0%	*26,295.0	*93.5%	*22,935.0	*93.0%	*25,000.0	*92.5%
2	2	Bridgestone Corp. <i>Tokyo, Japan</i>	26,600.0	*85.0%	*23,653.0®	*80.0%	*20,750.0	*74.0%	*24,325.0	*75.0%
3	3	Goodyear Tire & Rubber Co. <i>Akron, Ohio</i>	17,892.3	86.0%	14,917.0	85.0%	10,399.0®	84.0%	12,524.0®	85.0%
4	4	Continental A.G. <i>Hanover, Germany</i>	*12,420.0	*30.0%	*12,000.0	*30.0%	*9,908.0	*23.1%	*11,275.0	*22.6%
5	5	Sumitomo Rubber Industries Ltd. <i>Kobe, Japan</i>	7,160.0	85.5%	7,249.6	90.6%	6,369.1	86.0%	7,060.0	85.9%
6	6	Pirelli & C. S.p.A. <i>Milan, Italy</i>	6,956.5	100.0%	6,340.2	100.0%	4,888.8	100.0%	5,935.0	100.0%
7	7	Hankook Tire & Technology Co. Ltd. <i>Seoul, South Korea</i>	6,310.0	97.0%	5,975.8	95.7%	*5,305.0	*97.0%	*5,725.0	*97.0%
8	8	Yokohama Rubber Co.Ltd. <i>Tokyo, Japan</i>	5,744.9	87.7%	5,259.9	86.1%	4,349.0	81.4%	4,810.0	82.9%
9	9	Zhongce Rubber Group Co.Ltd. <i>Hangzhou, China</i>	4,175.8	94.3%	4,528.3	98.8%	3,896.2	98.0%	3,585.0	*98.0%
10	10	Maxxis International / Cheng Shin Rubber <i>Yuanlin, Taiwan</i>	3,676.9	100.0%	3,866.2	100.0%	3,788.7	100.0%	3,908.1	100.0%
11	11	Toyo Tire Corp. <i>Hyogo, Japan</i>	3,470.0	91.6%	3,226.6	90.0%	2,870.0	89.1%	3,060.0	88.2%
12	14	Sailun Group Co., Ltd. <i>Dongying City, China</i>	3,293.6	100.0%	2,823.0	100.0%	2,021.6	100.0%	2,038.5	100.0%

Company Mission & Vision

COMPANY MISSION



**WE ARE COMMITTED TO
ADVANCING TOWARDS
FUTURE MOBILITY**

COMPANY VISION



**TO BE A GLOBAL LEADING
TIRE MANUFACTURER**



Most Advanced Equipment



Best Raw Material



Leanest Management



Latest Technology

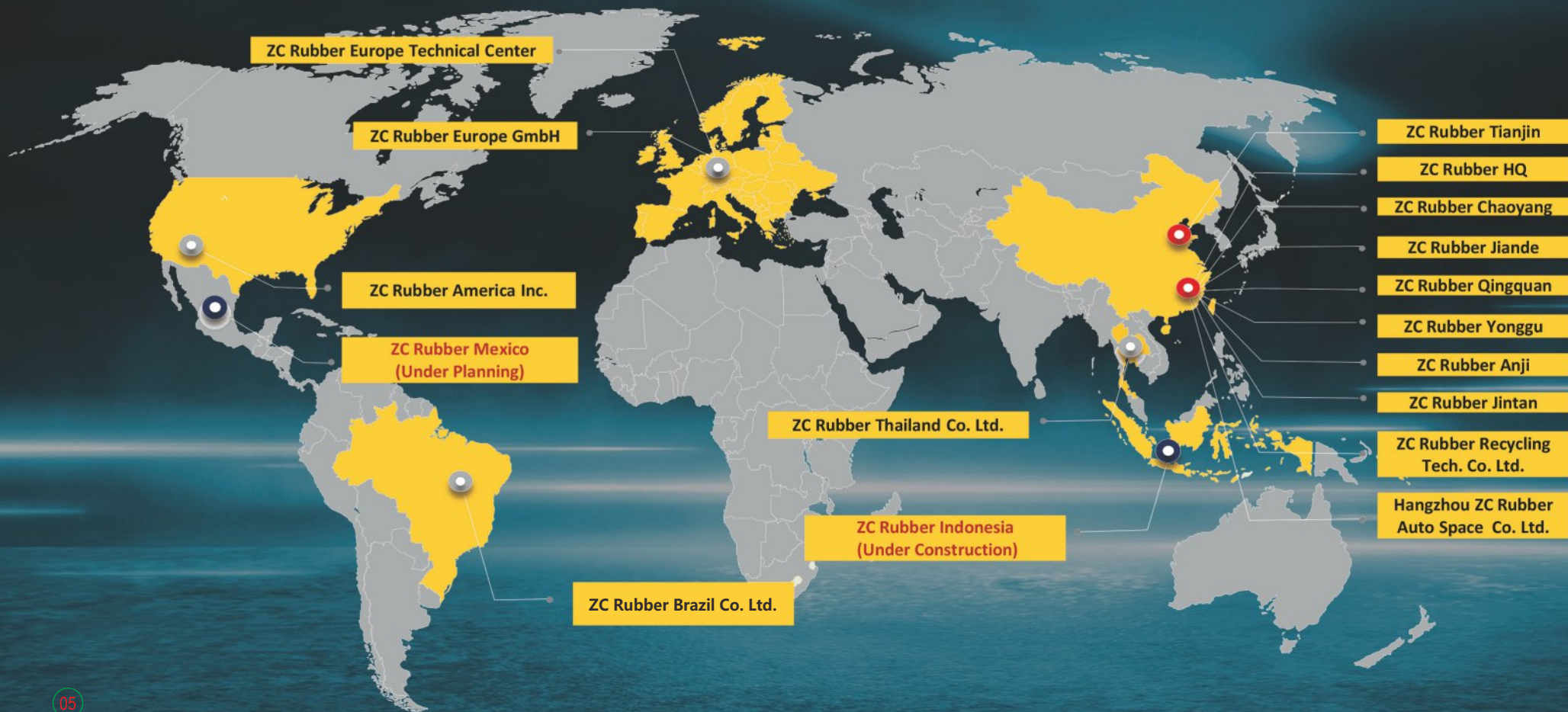


Least Energy Consumption



Most Suitable Products

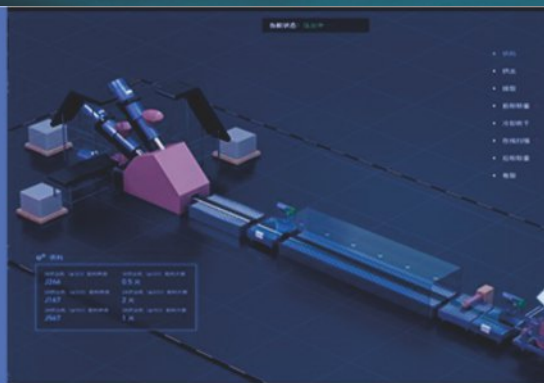
Global Distribution



Technology & Development



ET Industrial Brain



Future Factory



Industry 4.0 Smart
Manufacturing System



3.06亿元 中策橡胶绿色制造系统集成项目
306 million RMB ZC Rubber green production system integration project



Authoritative Vehicle
Testing Field



Global Testing Network



Electric Vehicle OEM Partnership



Neta X



AITO M7



M-Hero 917



BYD Dolphin



Geely Geometry E



AION Y



JAC EV3



Changan
Qiyuan A07



Leapmotor T03



Chery Fengyun A8
(Developing)



Neta L



AITO M5
(Developing)



BYD Yuan Plus



Geely Panda Mini



Changan CD701
(Developing)



Leapmotor C01



Neta V



BYD Seagull



Geely Galaxy L7



Changan
Deepal G318
(Developing)



Leapmotor C11



BYD Yuan Up

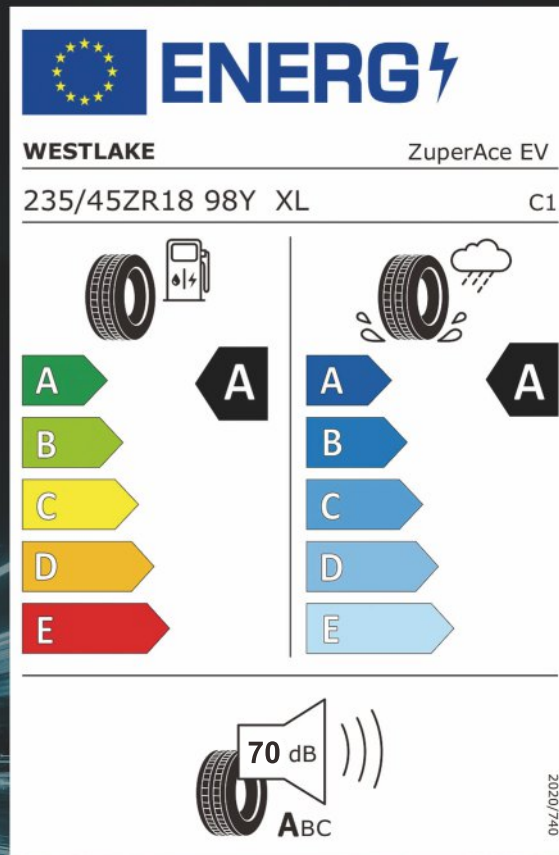


Geely Galaxy E8

WEST LAKE

ZuperAce EV

E-MOBILITY IS COMING YOUR WAY



ZuperAce EV ⚡





Benefits and Features

Quiet Ride Innovated Zuper-Silent technology effectively reduces tire noise by using all-season noise-absorbing foam, 3D noise control sound bolts, and anechoic chamber.

Super Grip With BPOT technology, the ZuperAce EV has excellent handling thanks to a 5% larger contact area at high speeds, while the Hybrid Formula provides optimized grip and stability.

Fuel Saving The DMOT design theory, coupled with Gen II Hybrid Silane compound, promises more uniform tire deformation and reduced rolling resistance.

SuperAce EV

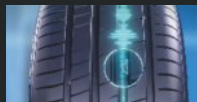
FEATURE

BENEFIT



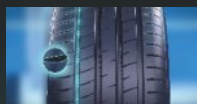
Noise-absorbing Foam
(applicable for selected sizes)

Lower tire cavity noise & less body transmission



3D Noise Control Sound Bolts

Restricted tread air flow to minimize noise



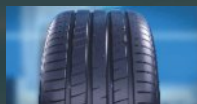
Anechoic Chamber

Reduced tread noise by scrambling the sound waves



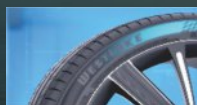
Aramid Reinforced Belt

Aramid reinforced belt for exquisite handling by maintaining the optimized footprint



Asymmetrical Tread Design

Fast water drainage with shorter wet braking distance



Dark Velvet Sidewall Design

More premium visual presence

Zuper-Silent Tech™

Quiet Ride



Minimal Tire Noise

- 3D Noise Control Sound Bolt restricts tread air flow to minimize noise
- Noise-absorbing Foam lowers tire cavity noise and low-mid frequency road noise

Hybrid Formula™

Strong Grip

Hybrid Formula™ = Super hybrid rubber compound Fast water drainage and strong grip



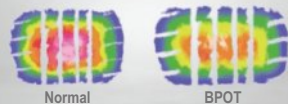
Exceptional Grip

- Super hybrid rubber compound for enhanced grip and braking
- Highly reduced rolling resistance for less fuel consumption

BPOT Technology™

Improved Durability

BPOT Technology optimize the footprint and improve durability



Improved Handling Performance

- Optimized tire footprint for improved high-speed handling performance
- Better contact pressure distribution for longer mileage
- Less deformation and extended durability due to improved heat dissipation

Gen II Hybrid Silane™

Driving Comfort

Hybrid Silane™ to optimize tread rubber compound Soft Tread Compound and Minimized Vibration



Enhanced Driving Comfort

- Upgraded silica tread compound for further reduced rolling resistance
- Softer tread compound for excellent grip and handling
- Minimized interior noise caused by vibrations on the road

DMOT Design Theory

Reduced Rolling Resistance



Reduced Rolling Resistance

- Uniform deformation between components
- Significant reduction of rolling resistance



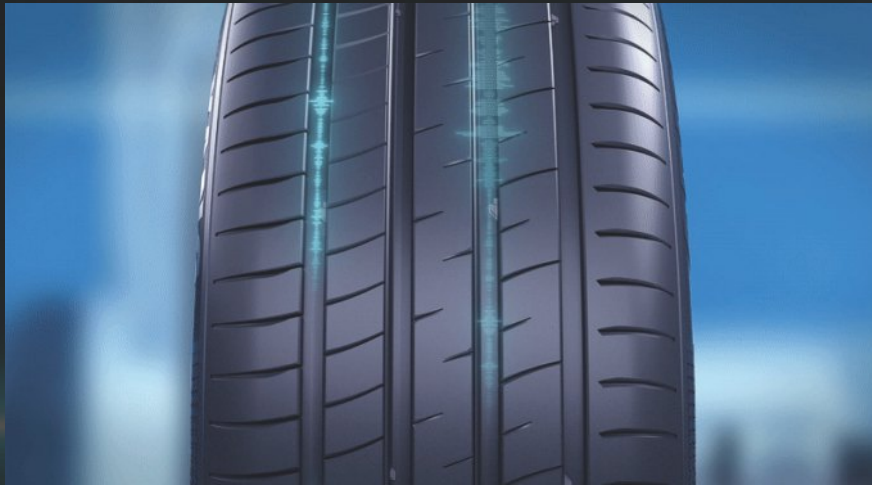
Sound-absorbing Material Inside Tread

- Sound-absorbing nano-polyurethane materials
- Optimized for various road surfaces in all weather
- Minimize tire cavity noise
- Reduce low and medium frequency tire noise



32 3D Noise Control Soundbolts

- Reduce mid- and high-frequency pattern noise
- Disrupt tread airflow
- Break up groove noise waves
- Avoid sound resonance



Unique Anechoic Chamber

- Minimize mid- and high-frequency pattern noise using different bands of sound to diminish each other



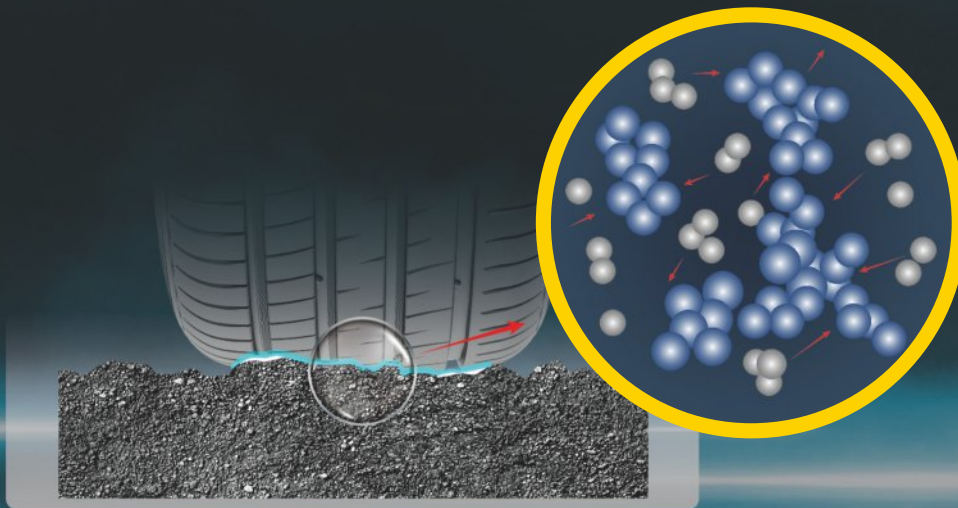
Normal
Contact Area 90%



BPOT (120 km/h)
Contact Area **95%**

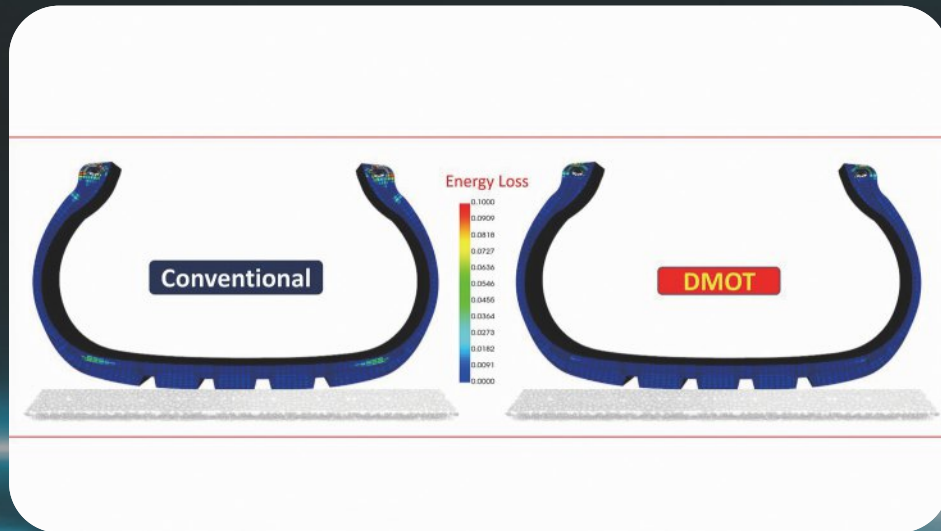
5% Larger Contact Area at High Speeds

- Optimized contact pressure distribution and footprint for improved handling performance
- Shortened braking distance



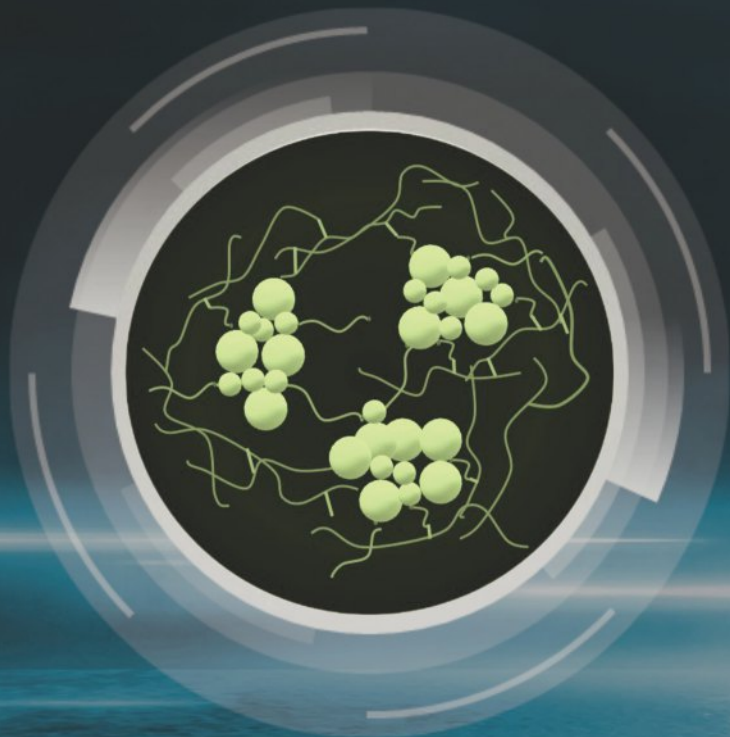
Nano-silica Tread Compound

- Optimized combination of silica nano particles of varying hardness and sizes in the tread compound
- Superior grip and driving stability for a safer driving experience



Balanced Contour Deformation

- Optimized tire component shape
- Uniform tire contour deformation
- Low rolling resistance performance



10% Increase in Mileage

- Upgraded silica tread compound with Hybrid Formula, using eco-friendly silane coupling agent
- Reduced rolling resistance
- 10% increase in mileage

Performance Chart



Key Performance Highlight

Wet Braking

WESTLAKE ZuperAce EV 101.33%

Competitor 100%

Interior Noise

WESTLAKE ZuperAce EV 101.12%

Competitor 100%

Rolling Noise

WESTLAKE ZuperAce EV 101.12%

Competitor 100%

Rolling Resistance

WESTLAKE ZuperAce EV 101.33%

Competitor 100%



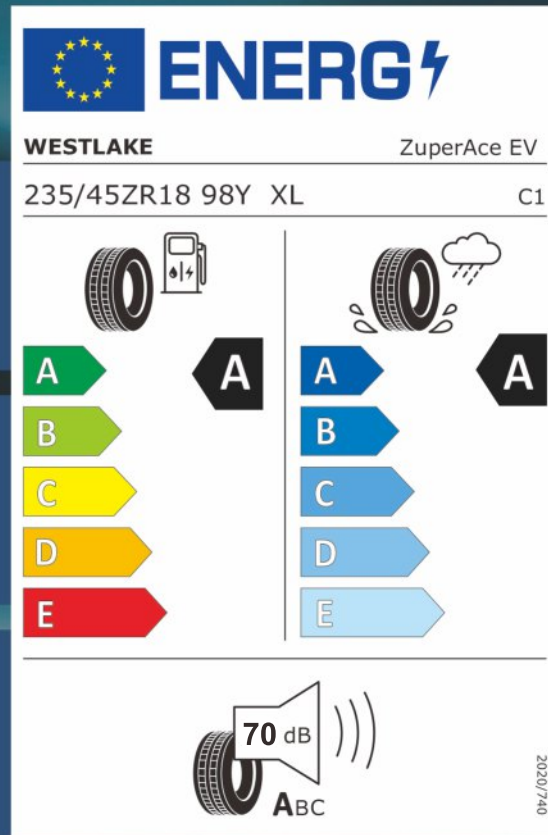
Rolling Resistance: 6.5



Wet Grip: 1.64



Rolling Noise: 70 dB



WEST LAKE



www.westlaketyre.com



www.facebook.com/westlaketyreglobal



ZHONGCE RUBBER GROUP CO., LTD.



www.zc-rubber.com



www.facebook.com/zcrubber



www.twitter.com/zc_rubber



www.linkedin.com/company/zcrubber