



www.westlaketyre.com/eu



facebook.com/westlaketyreglobal



ZHONGCE RUBBER GROUP CO., LTD.



www.zc-rubber.com



facebook.com/zcrubber



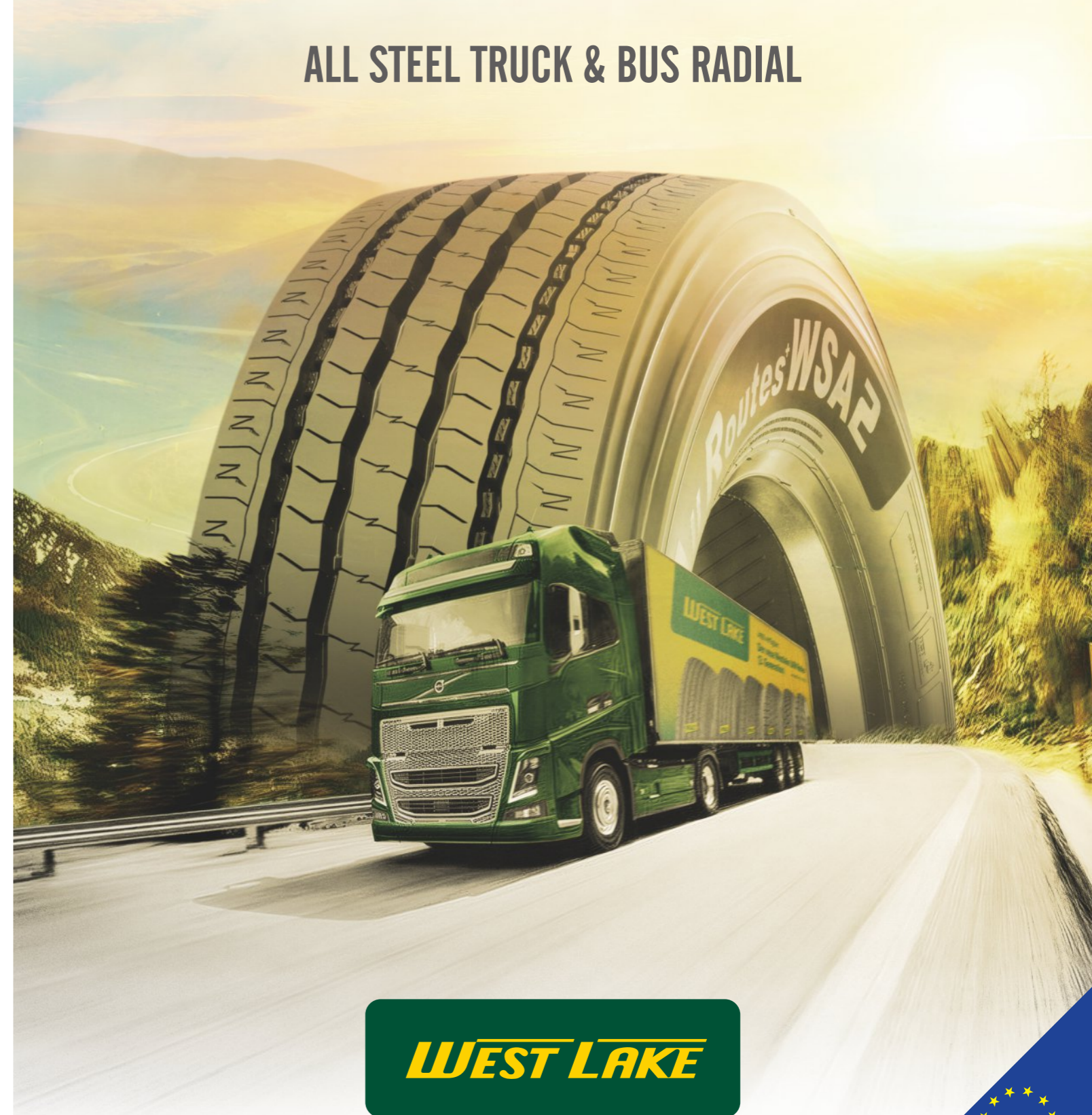
twitter.com/zc_rubber



linkedin.com/company/zcrubber

TYRE CATALOGUE

ALL STEEL TRUCK & BUS RADIAL



Made in Thailand



ENTERPRISE INTRODUCTION



- A Company Established in Year 1958
- No. 1 Tyre Manufacturer in China
- No. 9 of Top 75 Global Tyre Manufacturers in Year 2021
- Sale Revenue Reached USD3.896 Billion in Year 2020

Zhongce Rubber Group Co., Ltd (ZC RUBBER) is a global tyre company based in Hangzhou, China and was founded in 1958. Over our more than 60 years of history, we experienced continuous growth in quality and reputation to become the Top 10 tyre manufacturer worldwide today.

Our engineers with our international R&D team focus on constant technological development and innovation spending millions of US dollars in research and development each year and upgrading our production and testing facilities. The ET Industrial Brain in the production process promises our smart production and guarantee tires with high quality, safety, and value with maximum efficiency.

We have formed an extensive global service network of about 1,200 distributors with 250,000 sales locations in 160 countries. Our subsidiaries in Thailand, Germany, Brazil, and the United States serve customers without any difference in time and language. We are dedicated to better support our suppliers, distributors, and customers through a one-stop service.

Safe and Value are always the key of our company. We take pride in the superior quality of our tyre products and the first-rate services. We are still endeavoring to become one of the most respected tyre manufacturers globally and craft a better future with all partners and friends.



China Compulsory Certification



US DOT Certification



European E-MARK Certification



SNI Certification of Indonesia



BIS Certification of India



INMETRO Certification of Brazil



GLOBAL STRATEGIC LAYOUT





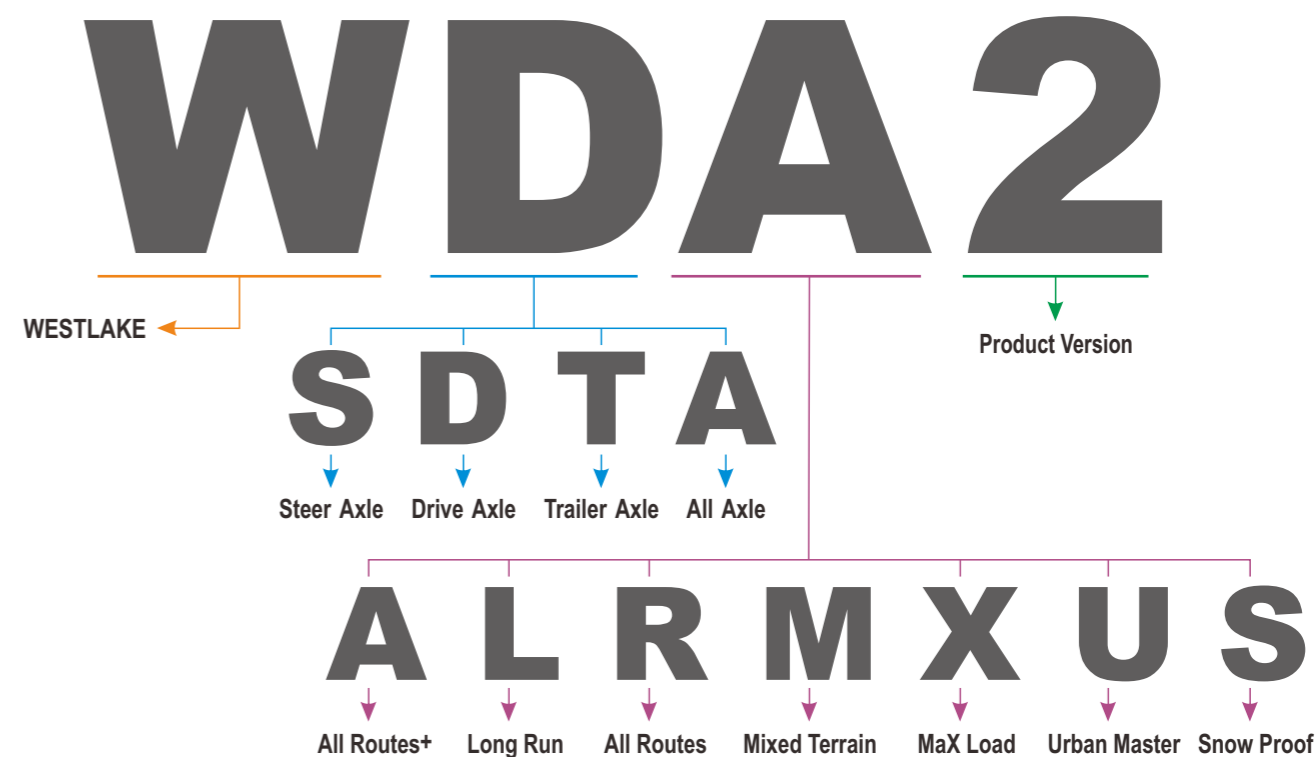
WESTLAKE TYRE FEATURES

- Special Tread design for each truck application
- Durability of tyres
- Strong tyre casing for retread
- Cool running tyres helping to save fuel
- Eco-friendly product and REACH conformity
- ISO 9001 certified production

Application and Key Feature Legend

A	All Routes+ (Long Haul) (Regional)		WSA2 ^{LT} / WSA2 / WDA2 ^{LT} / WDA2	P 11-15
L	Long Run (Long Haul)		WSL1 / WDL1 / WTL1	P 16-19
R	All Routes (Regional)		WSR ¹ / WSR1 / WDR ¹ / WDR1 / WTR1	P 20-25
M	Mixed Terrain (Mixed Service)		WSM2 / WDM2 / WDM1 / WTM1	P 26-30
X	MaX Load (Low Loader)		WTX1	P 31-32
U	Urban Master (Urban)		WAU1	P 33-34
S	Snow Proof (Winter)		WSS1 / WDS1 / WTS1	P 35-38

How to Read the Profile Name

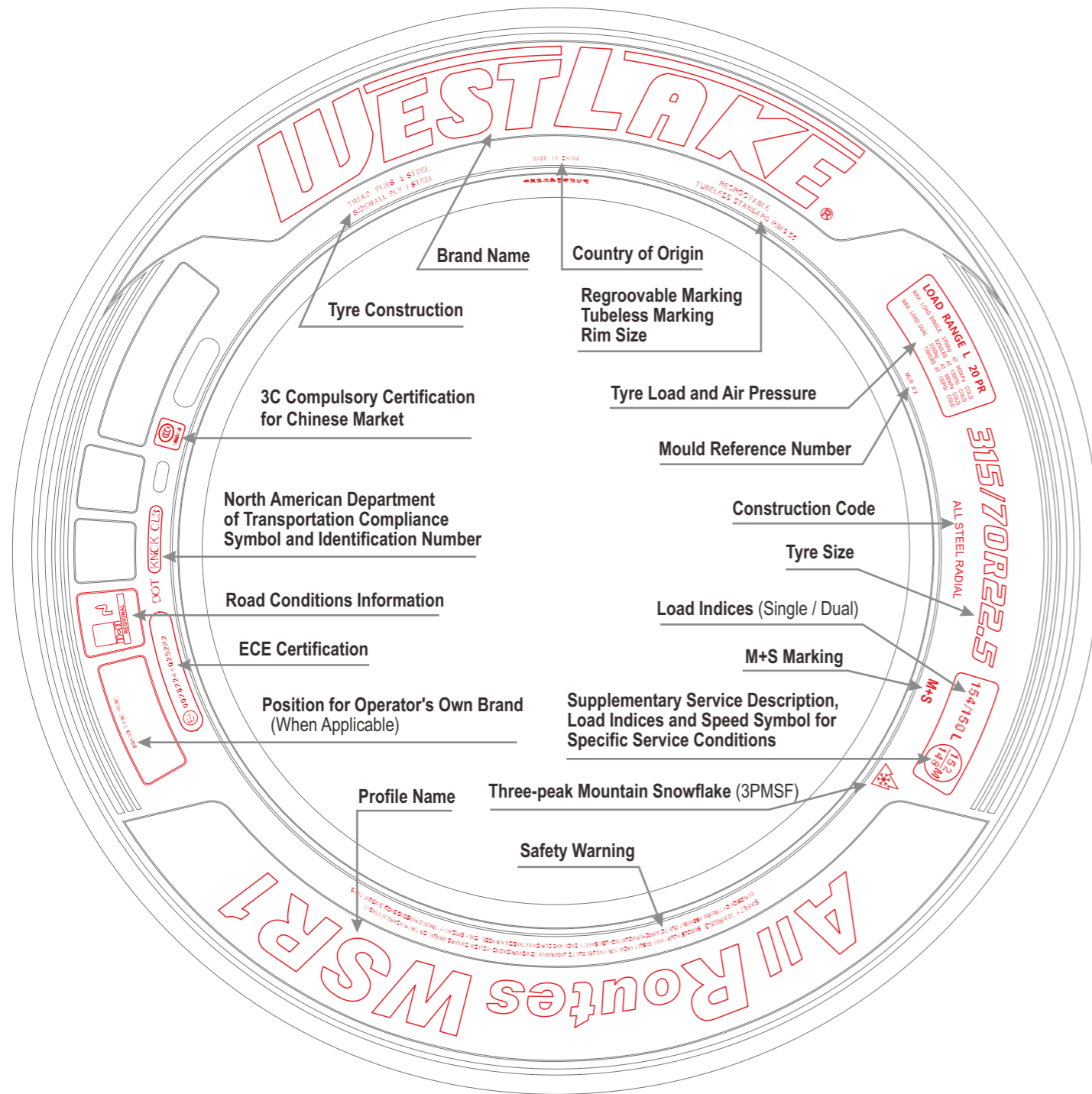


TYRE SIDEWALL INSTRUCTION

A series of internationally used numbers and codes exist for the identification of tyre structures, dimensions and main applications as well as the producer information.

This group of codes and numbers is collectively known as the "tyre markings" and permits a precise identification of the tyre.

The picture below gives an example of the tyre markings as they appear on a tyre.



TECHNOLOGIES FOR TYRES WITH THE VALUE

WESTLAKE is constantly striving to create the best solutions for each application. **WESTLAKE's** commitment to you and to the environment ensures cost-effective quality tyres.

WESTLAKE's Concept

WESTLAKE provides tyres with longer mileage, greater retreadability, more durability and less fuel consumption, in one word, more value, to fleets in Europe.

Given the extreme demands of today's transport industry, Westlake invests on continuous innovation in tyre technology which is essential and helps the fleets who seek tyre value and cost saving.

Tyre Construction

Tread

Compounds used in the tread depend on the tyre's specific application needs. WESTLAKE has various compounding strategies to minimise tyre treadwear, and maximise traction, fuel efficiency, and resistance to fatigue, chipping and scaling.

Belt Edge Cushion

WESTLAKE tyres feature a belt edge cushion to help to enhance the structure durability, and therefore extend the tyre life.

Inner Liner

WESTLAKE's inner liner is specially designed to maintain the air pressure of each tyre to avoid any possible tyre damage. The special inner liner compound ensures a significantly longer casing life.

Bead Filler

Two or more different compounds are used in WESTLAKE's bead filler to stiffen the bead for steering response and to control the flexibility of other parts of the tyre.

Belts and Casing

Thin, highly adhesive assembly compounds are used in WESTLAKE's tyre casing and belts to improve the steel cords strength.

Undertread

WESTLAKE's undertread compounds generate less heat in order to prevent tread separation.

Sidewall

WESTLAKE applies special sidewall compounds high flexibility, excellent durability and high resistance to fatigue and weather cracking.

Rim Cushion

WESTLAKE's rim cushion compound is highly resistant to the heat brought by the heavy load or transmitted by the rim so as to extend the tyre life.



WESTLAKE: YOUR SMART INVESTMENT

Recommendations to ensure the top performance of your WESTLAKE tyres.

Inflation Pressure

Truck tyres for commercial vehicles must be properly inflated to a pressure based on the load, speed and conditions of use for maximum performance in all aspects such as even wear (long mileage), traction and handling stability (riding comfort) in addition to safety issues*.

*Check WESTLAKE's recommendations of PRODUCT TECHNICAL DATA at page 23-24 of this catalogue.

CORRECT INFLATION	UNDERINFLATION	OVERINFLATION
maintains even road contact for maximised performance.	causes abnormal tyre deflection, which builds up excessive heat, and risk of failure. It also causes excessive wear on the shoulder.	increases the risk of impact breaks and other road hazard damage. It also causes excessive wear in the centre.

Tyre pressures should be checked on cold tyres at least every two weeks, using a calibrated pressure gauge. Tyres with lower profiles must be checked strictly due to their less visible sidewall deflection.

WESTLAKE provides inflation pressure stickers (shown as the right) with several different values for certain applications to help customers maintain proper pressures. Please contact your WESTLAKE distributor for details.

850/8.50/124
kPA Bar PSI

WEST LAKE TRUCK & BUS TYRES

Retreading

Every new WESTLAKE truck tyre product is designed and constructed for better retreadability. Please consult your WESTLAKE distributor for details.

Regrooving

Regrooving must be undertaken when only between 2 to 3 mm of the original tread pattern remains, in accordance with WESTLAKE's recommendations in this catalogue.

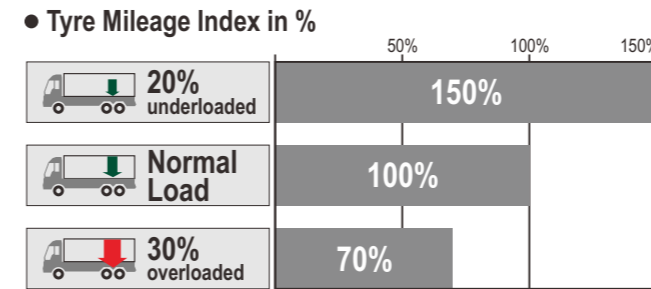
Tyre Wear Factors

FUEL ECONOMY & THE ENVIRONMENT

These tables indicate factors of tyre wear. If all factors are taken into consideration and applied correctly according to your vehicle and situation, it will result in best fuel efficiency and help for the protection of our environment.

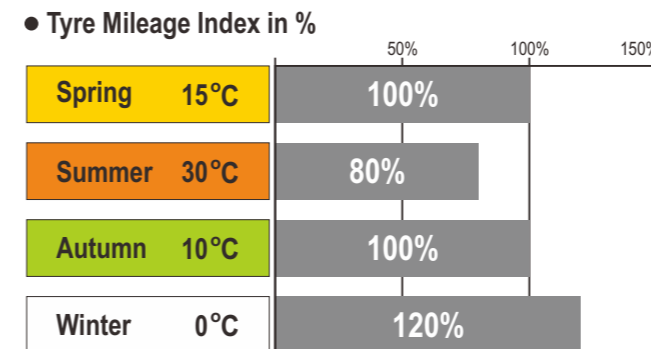
Please contact your WESTLAKE distributor for more details.

CARRYING LOAD



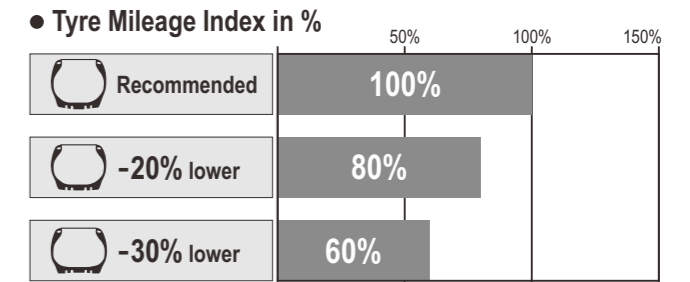
Tyre wear depends upon the payload carried. WESTLAKE recommends carrying the payload on correct axles and carry heavy load on drive axle position if applicable.

SEASONAL / AMBIENT TEMPERATURES



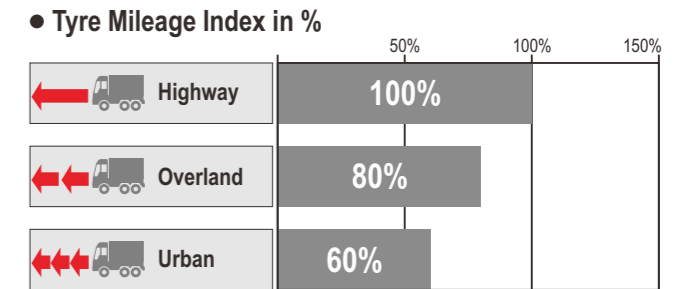
Tyre wear is temperature dependent. WESTLAKE recommends carrying out a tyre service before the summer season.

INFLATION PRESSURE



The proper inflation pressure is essential for the tyre performance for every application. WESTLAKE recommends frequent inflation checking. If necessary increase tyre inflation as per the recommendation of load and inflation PRODUCT TECHNICAL DATA or inflation stickers.

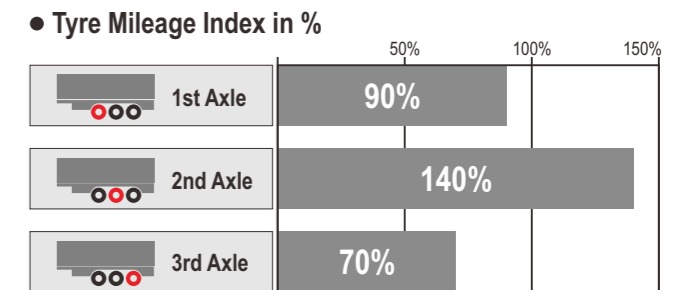
STOP AND ACCELERATION OPERATION



Rapid or frequent stop and acceleration traffic results in additional tread wear to tyres and reduce the tyre life.

WESTLAKE recommends mild steering & braking especially while turning or curving in daily use. Furthermore new products with special tread and enhanced sidewall will be developed for city operation with more frequent "stop and go" situation.

TRAILER AXLES



Trailer tyre wear is dependent on the side force of the axles of trailers. WESTLAKE recommends proper tyre rotation when utilizing retreaded tyres.



- Hybrid concept of long haul and regional application
- Excellent fuel efficiency with maximum mileage
- Improved road grip prepare for various road surface

Highway Country Road City Construction Site






WSA2^{LT}

M+S 

All Routes+ / Steer Axle

2nd generation steer tyre engineered with innovative WESTLAKE's latest technology for both long haul and regional operations with rims of 17.5" and 19.5".

- Wide tread width offers high tread rubber volume to guarantee higher long mileage.
- Four wavy main grooves provide excellent handling and drainage performance on long haul and regional applications.
- Multi-lateral kerfs provide better traction and even wear.

SIZE	SERVICE INDEX				NOISE (dB)
215/75R17.5	128/126M	E	D	A	72
225/75R17.5	129/127M	E	D	A	72
235/75R17.5	132/130M	E	D	A	72
265/70R19.5	140/138M	D	C	A	72





WSA2



All Routes+ / Steer Axle

2nd generation steer tyre engineered with innovative WESTLAKE's latest technology for both long haul and regional operations.

- Wide tread width offers high tread rubber volume to guarantee higher long mileage.
- Four wavy main grooves provide excellent handling and drainage performance on long haul and regional applications.
- Multi-lateral kerfs provide better traction and even wear.

SIZE	SERVICE INDEX				NOISE (dB)
385/55R22.5	160K(158L)	C	B	B	73
315/70R22.5	156/150L	D	B	B	73
295/80R22.5	154/149L	D	C	B	73
315/80R22.5	156/153L(154/151M)	D	B	B	73



WDA2^{LT}



All Routes+ / Drive Axle

2nd generation drive tyre engineered with innovative WESTLAKE's latest technology for both long haul and regional operations with rims of 17.5" and 19.5".

- Combination tread block design improves grip ability and driving power.
- Multi 3D sipes offer low rolling resistance and outstanding traction.
- Wide tread width guarantees riding stability and longer mileage.

SIZE	SERVICE INDEX				NOISE (dB)
215/75R17.5	128/126M	E	D	A	72
225/75R17.5	129/127M	E	D	A	72
235/75R17.5	132/130M	E	D	A	72
265/70R19.5	140/138M	E	C	B	74





WDA2

M+S



All Routes+ / Drive Axle

2nd generation drive tyre engineered with innovative WESTLAKE's latest technology for both long haul and regional operations.

- Combination tread block design improve grip ability and driving power.
- Multi 3D sipes offer low rolling resistance and outstanding traction.
- Wide tread width guarantees riding stability and longer mileage.

SIZE	SERVICE INDEX				NOISE (dB)
315/70R22.5	156/150L	D	C	B	74
295/80R22.5	154/149K	E	C	B	74
315/80R22.5	156/153L(154/151M)	D	C	B	74



- Long distance journey with constant speed and less braking and accelerating
- Excellent paved road condition with less curves
- Less fuel consumption and comfortable ride
- High mileage performance

Highway

Country Road

City

Construction Site



WSL1

M+S



Long Run / Steer Axle

New steer tyre designed with innovative WESTLAKE latest technology for long haul application.

- Computer-aided design tyre structure provides excellent footprint profile and ensures superior comfort.
- Special tread compound guarantees low rolling resistance help to reduce fuel consumption.
- Straight tread pattern designed to minimize uneven wear.

SIZE	SERVICE INDEX				NOISE (dB)
355/50R22.5	156K(154L)	D	C	B	73
385/55R22.5	158L(160K)	D	C	B	73
295/60R22.5	150/147K(149/146L)	D	C	B	73
315/60R22.5	154/150L	D	C	B	73



WDL1

M+S



Long Run / Drive Axle

New drive tyre designed with innovative WESTLAKE latest technology for long haul application.

- Deep tread depth and wider tread with robust tread block produce outstanding traction on both dry and wet road surfaces.
- Special shoulder design with low-heating compound ensures less tread wear longer tyre life.
- Tread pattern designed to enhance mileage, traction and driving stability.

SIZE	SERVICE INDEX				NOISE (dB)
295/55R22.5	147/145K	D	C	B	74
295/60R22.5	150/147K(149/146L)	D	D	B	74
315/60R22.5	154/150K(152/148L)	D	C	B	74





WTL1

M+S



Long Run / Trailer Axle

New wide base trailer tyre with WESTLAKE's latest technology for long haul application.

- 5-Rib tread design enhances longer mileage.
- Computer-aided design tyre structure provides excellent footprint profile and ensures superior comfort and even wear.
- Special tread compound guarantees less fuel consumption with lower rolling resistance.
- Stone ejectors in U-shape grooves minimize the stone holding and penetration.

SIZE	SERVICE INDEX				NOISE (dB)
445/45R19.5	160L	C	C	B	73
435/50R19.5	160J	D	C	B	73
385/55R22.5	160K(158L)	C	C	A	71
385/65R22.5	158L(160K)	C	C	A	71



- Short to middle distance journey with frequent braking, accelerating and turning
- Good paved road with many curves and unexpected rough conditions
- Challenging road conditions in winter with snow and ice



Highway

Country Road

City

Construction Site



WSR+1

M+S



All Routes / Steer Axle

New steer tyre engineered with innovative WESTLAKE's latest technology for local and regional operations with rims of 17.5" and 19.5" .

- Computer-aided design 5-Rib tread provides precise handling.
- Tread sipes alongside tread grooves offer outstanding wet operation and even tread contact on road surfaces.
- Advanced tyre casing design promises good footprints and avoids uneven wear.

SIZE	SERVICE INDEX				NOISE (dB)
245/70R17.5	136/134M	E	D	B	72
205/75R17.5	124/122M(126/124G)	E	D	B	72
215/75R17.5	128/126M	E	D	B	72
225/75R17.5	129/127M	E	D	B	72
235/75R17.5	132/130M	E	D	B	72
245/70R19.5	136/134M	D	D	B	72
265/70R19.5	140/138M	D	D	B	72
285/70R19.5	146/144M	D	D	B	72



WSR1

M+S



All Routes / Steer Axle

New steer tyre engineered with innovative WESTLAKE's latest technology for local and regional operations.

- Advanced 5-Rib tread provides even wear and remarkable handling.
- Specially designed tread pitches ensure low external noise.
- Tread sipes with straight tread grooves guarantee excellent water drainage and outstanding wet traction.
- Computer-aided design tyre casing promises good footprints to extend tyre life.

SIZE	SERVICE INDEX				NOISE (dB)
385/65R22.5	158L(160K)	C	C	A	71
315/70R22.5	156/150L	C	C	A	71
295/80R22.5	154/149M	D	C	A	71
315/80R22.5	154/151M(156/153L)	C	C	A	71





WDR⁺1

M+S



All Routes / Drive Axle

New drive tyre designed for local and regional application with rims of 17.5" and 19.5".

- Deep tread depth and wider tread with robust tread blocks ensure outstanding traction on both dry and wet road surfaces.
- Excellent footprint design promises even wear and remarkable tyre life.

SIZE	SERVICE INDEX				NOISE (dB)
245/70R17.5	136/134M	E	D	B	74
205/75R17.5	124/122M	E	D	B	74
215/75R17.5	128/126M	E	D	B	74
225/75R17.5	129/127M	E	D	B	74
235/75R17.5	132/130M	E	D	B	74
245/70R19.5	136/134M	E	C	B	74
265/70R19.5	140/138M	E	C	B	74
285/70R19.5	146/144M	E	C	B	74



WDR1

M+S



All Routes / Drive Axle

New drive tyre designed for local and regional application.

- Deep tread depth ensures longer tyre life.
- Directional tread pattern and robust tread blocks produce outstanding traction on both dry and wet road surfaces.
- Excellent footprint design promises even wear and remarkable tyre life.
- Special shoulder design with low-heating compound minimizes shoulder heel & toe wear.
- Applicable for snow roads with excellent traction capabilities.

SIZE	SERVICE INDEX				NOISE (dB)
315/70R22.5	154/150L(152/148M)	E	C	B	74
295/80R22.5	152/149M	E	C	B	74
315/80R22.5	156/153L(154/151M)	E	C	B	74





WTR1

M+S



All Routes / Trailer Axle

New wide base trailer tyre with WESTLAKE's latest technology for local and regional application.

- 5-Rib tread and strong shoulder design provide excellent carrying capacity and longer tyre life.
- Computer-aided design tyre structure provides excellent footprint profile and ensures superior comfort and even wear.
- Special tread compound guarantees less fuel consumption with lower rolling resistance.
- Stone ejectors in U-shape grooves minimize the stone holding and penetration.

SIZE	SERVICE INDEX				NOISE (dB)
385/55R22.5	160K(158L)	C	C	A	71
385/65R22.5	158L(160K)	C	C	B	72
425/65R22.5	165K	C	C	B	73
445/65R22.5	169K	C	C	B	73



- Used both on and off road with expected aggressive, sharp-edge or muddy road condition
- Heavy loads and outstanding durability at slow speed and constant stopping
- Special protection against the damage caused by the road condition

Highway

Country Road

City

Construction Site





WSM2

M+S



Construction Site / Steer Axle

2nd generation steer tyre with latest WESTLAKE technology for on & off operation.

- Wider tread width and solid shoulder offer improved tread stiffness, leading to an increased mileage and rolling resistance.
- Three zigzag grooves and multi-angular sipes improve traction and braking performance.
- Polygonal block pattern provides outstanding traction and braking performance.

SIZE	SERVICE INDEX				NOISE (dB)
315/80R22.5	156/153K(154/151L)	D	C	B	74



WDM2

M+S



Construction Site / Drive Axle

2nd generation drive tyre with latest WESTLAKE technology for on & off operation.

- Aggressive and high fill to void ratio blocks provides outstanding traction and longer mileage.
- The tie-bar between blocks guarantee outstanding straight driving performance and impact dispersion for the blocks.
- Stone ejector platforms prevent stones from lodging in grooves and drilling into belts.

SIZE	SERVICE INDEX				NOISE (dB)
13R22.5	156/151K	D	C	B	74
315/80R22.5	156/153K(154/151L)	E	C	B	74





WDM1

M+S



Construction Site / Drive Axle

New strong casing tyre with latest WESTLAKE technology for on & off operation.

- Aggressive directional tread and open tread shoulder with robust tread blocks provide extra traction for On & Off application.
- Special tread compound promises better resistance to cuts and tearing.
- Enhanced sidewall structure minimizes unexpected damage from rough road condition.

SIZE	SERVICE INDEX				NOISE (dB)
13R22.5	156/151K	E	C	B	74
295/80R22.5	152/149K	E	B	B	74
315/80R22.5	156/153K(154/151L)	E	B	B	74



WTM1

M+S



Construction Site / Trailer Axle & Steer Axle

New strong casing multi-service tyre for on & off operation.

- Aggressive tread pattern promises remarkable traction for On & Off application.
- Outstanding self-cleaning tread with stone ejector minimizes stone holding and penetration and ensures longer tyre life.
- Robust tread blocks and rugged sidewall casing allow heavy loads and resist casing penetration and damage.

SIZE	SERVICE INDEX				NOISE (dB)
385/65R22.5	160K(158L)	C	C	B	73





WTX1

M+S

MaX Load / Trailer Axle

New trailer tyres with advanced WESTLAKE technology for long haul and regional application.

- Strong Computer-aided design tyre casing guarantees outstanding capacity for heavy loads and highway.
- Special sipes alongside tread ribs help to minimize heating for high speed running with heavy loads.
- Special tread compound provides higher fuel efficiency with lower rolling resistance without sacrificing tyre mileage.



SIZE	SERVICE INDEX				NOISE (dB)
205/65R17.5	129/127K(132/132F)	D	C	B	71
215/75R17.5	135/133J	D	C	B	71
235/75R17.5	143/141J(144/144F)	D	C	B	71
245/70R17.5	143/141J(146/146F)	D	C	B	71
245/70R19.5	141/140J	C	C	B	71
265/70R19.5	143/141J	C	C	B	71
285/70R19.5	150/148J	C	C	B	72



- Applicable for heavy load trailers
- Short to long distance transport with reinforced tyre casing for heavy loads

Highway Country Road City Construction Site





WAU1

M+S



Urban Master / Steer Axle & Drive Axle

New all-position tyre with innovative WESTLAKE's technology for urban application.

- Optimised pattern design minimizes the rolling noise.
- Cool-running compound delivers low rolling resistance meaning more fuel efficiency.
- Applies kerfs to optimise tread stiffness, prevents irregular wear.
- Three zigzag grooves guarantee excellent traction on wet and dry road.
- Sidewall protector ribs help resist sidewall damage from turning, backing and braking when used in urban neighborhoods.

SIZE	SERVICE INDEX				NOISE (dB)
275/70R22.5	150/145J	D	C	A	71



- Frequent speed changes and turning
- Resistance to curb impact
- Excellent road grip and durable high mileage

Highway Country Road City Construction Site





WSS1



Snow Proof / Steer Axle

New Steer tyre with WESTLAKE's latest technology for winter application.

- Wide and deep circumferential grooves enhances removal of snow and ice.
- Specific tread compound keeps rubber softness in low temperature with good performance.
- Wide tread with advanced block and sipe design provides extra traction for snow and ice road conditions.

SIZE	SERVICE INDEX				NOISE (dB)
315/70R22.5	156/150L(152/148M)	E	C	B	73
295/80R22.5	154/149L	E	C	B	73
315/80R22.5	154/151M(156/153L)	E	C	B	73



- Designed for winter use only
- Extraordinary traction on snow and ice road surface

Highway Country Road City Construction Site





WDS1

M+S



Snow Proof / Drive Axle

New drive tyre with WESTLAKE's latest technology for winter application.

- Wide open shoulder delivers additional traction without compromising tread life.
- Specific tread compound keeps rubber softness in low temperature with good performance.
- Studable tread design provides extra traction for snow and ice road conditions.

SIZE	SERVICE INDEX				NOISE (dB)
315/70R22.5	154/150L(152/148M)	E	C	B	74
295/80R22.5	154/149L	E	C	B	74
315/80R22.5	156/153K(154/151L)	E	C	B	74



WTS1

M+S



Snow Proof / Trailer Axle (Steer Axle Applicable)

New wide base trailer tyre with WESTLAKE's latest technology for winter application.

Also applicable for steer axle.

- New trailer winter tyre for severe weather conditions.
- Maximized snow and ice grip with special tread compound and CAD tread pattern.

SIZE	SERVICE INDEX				NOISE (dB)
385/55R22.5	160K(158L)	D	C	A	71
385/65R22.5	158L(160K)	E	C	A	71



REGROOVING PROCEDURE

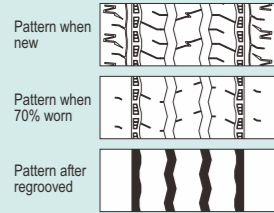


Regrooved pattern is shown in black.
Recut depth listed is maximum value.
Recut width listed has ±1 mm tolerance

All Routes⁺



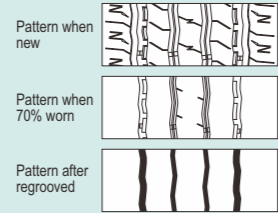
WSA2^{LT}



TYRE SIZE	DIMENSION OF REGROOVE	
	DEPTH (D)	WIDTH (W)
215/75 R 17.5	2.5mm	7.0mm
225/75 R 17.5	2.5mm	7.0mm
235/75 R 17.5	2.5mm	7.0mm
265/70 R 19.5	2.5mm	7.0mm



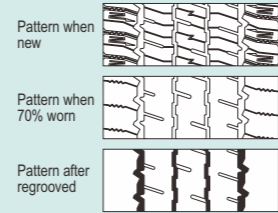
WSA2



TYRE SIZE	DIMENSION OF REGROOVE	
	DEPTH (D)	WIDTH (W)
385/55 R 22.5	2.3mm	7.0mm
315/70 R 22.5	2.3mm	7.0mm
295/80 R 22.5	2.3mm	7.0mm
315/80 R 22.5	2.3mm	7.0mm



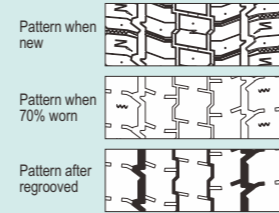
WDA2^{LT}



TYRE SIZE	DIMENSION OF REGROOVE	
	DEPTH (D)	WIDTH (W)
215/75 R 17.5	2.5mm	7.0mm
225/75 R 17.5	2.5mm	7.0mm
235/75 R 17.5	2.5mm	7.0mm
265/70 R 19.5	2.5mm	7.0mm



WDA2

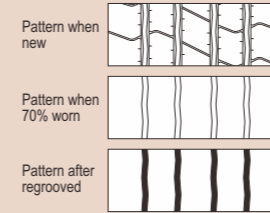


TYRE SIZE	DIMENSION OF REGROOVE	
	DEPTH (D)	WIDTH (W)
315/70 R 22.5	2.5mm	7.0mm
295/80 R 22.5	2.5mm	7.0mm
315/80 R 22.5	2.5mm	7.0mm

Long Run



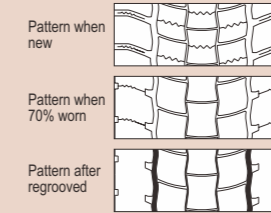
WSL1



TYRE SIZE	DIMENSION OF REGROOVE	
	DEPTH (D)	WIDTH (W)
355/50 R 22.5	2.3mm	7.0mm
385/55 R 22.5	2.3mm	7.0mm
295/60 R 22.5	2.3mm	7.0mm
315/60 R 22.5	2.3mm	7.0mm



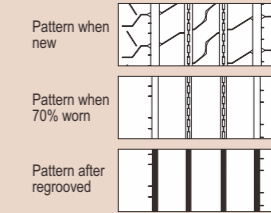
WDL1



TYRE SIZE	DIMENSION OF REGROOVE	
	DEPTH (D)	WIDTH (W)
295/55 R 22.5	2.5mm	7.0mm
295/60 R 22.5	2.5mm	7.0mm
315/60 R 22.5	2.5mm	7.0mm



WTL1

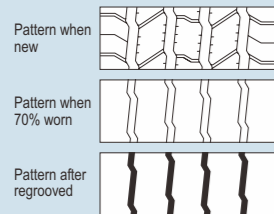


TYRE SIZE	DIMENSION OF REGROOVE	
	DEPTH (D)	WIDTH (W)
445/45 R 19.5	2.3mm	7.0mm
435/50 R 19.5	2.3mm	7.0mm
385/55 R 22.5	2.3mm	7.0mm
385/65 R 22.5	2.3mm	7.0mm

All Routes



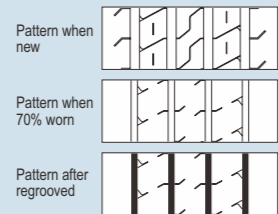
WSR+1



TYRE SIZE	DIMENSION OF REGROOVE	
	DEPTH (D)	WIDTH (W)
245/70 R 17.5	2.5mm	7.0mm
205/75 R 17.5	2.5mm	7.0mm
215/75 R 17.5	2.5mm	7.0mm
225/75 R 17.5	2.5mm	7.0mm
235/75 R 17.5	2.5mm	7.0mm
245/70 R 19.5	2.5mm	7.0mm
265/70 R 19.5	2.5mm	7.0mm
285/70 R 19.5	2.5mm	7.0mm



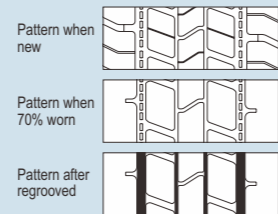
WSR1



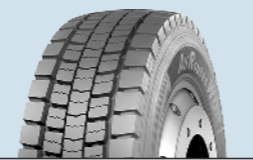
TYRE SIZE	DIMENSION OF REGROOVE	
	DEPTH (D)	WIDTH (W)
385/65 R 22.5	2.3mm	7.0mm
315/70 R 22.5	2.3mm	7.0mm
295/80 R 22.5	2.3mm	7.0mm
315/80 R 22.5	2.3mm	7.0mm



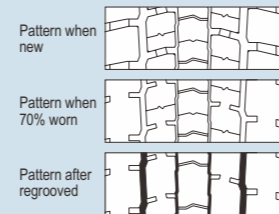
WDR+1



TYRE SIZE	DIMENSION OF REGROOVE	
	DEPTH (D)	WIDTH (W)
245/70 R 17.5	2.5mm	7.0mm
205/75 R 17.5	2.5mm	7.0mm
215/75 R 17.5	2.5mm	7.0mm
225/75 R 17.5	2.5mm	7.0mm
235/75 R 17.5	2.5mm	7.0mm
245/70 R 19.5	2.5mm	7.0mm
265/70 R 19.5	2.5mm	7.0mm
285/70 R 19.5	2.5mm	7.0mm



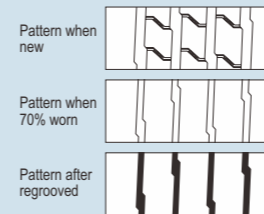
WDR1



TYRE SIZE	DIMENSION OF REGROOVE	
	DEPTH (D)	WIDTH (W)
315/70 R 22.5	2.5mm	7.0mm
295/80 R 22.5	2.5mm	7.0mm
315/80 R 22.5	2.5mm	7.0mm



WTR1

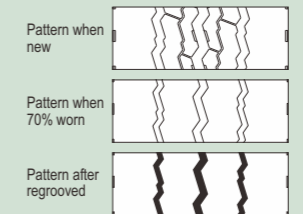


TYRE SIZE	DIMENSION OF REGROOVE	
	DEPTH (D)	WIDTH (W)
385/55 R 22.5	2.3mm	7.0mm
385/65 R 22.5	2.3mm	7.0mm
425/65 R 22.5	2.3mm	7.0mm
445/65 R 22.5	2.3mm	7.0mm

MaX Load



WTX1

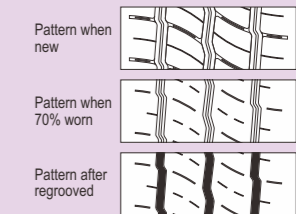


TYRE SIZE	DIMENSION OF REGROOVE	
	DEPTH (D)	WIDTH (W)
205/65 R 17.5	2.5mm	7.0mm
245/70 R 17.5	2.5mm	7.0mm
215/75 R 17.5	2.5mm	7.0mm
235/75 R 17.5	2.5mm	7.0mm
245/70 R 19.5	2.5mm	7.0mm
265/70 R 19.5	2.5mm	7.0mm
285/70 R 19.5	2.5mm	7.0mm

Urban Master



WAU1

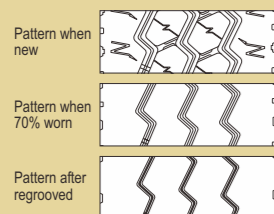


TYRE SIZE	DIMENSION OF REGROOVE	
	DEPTH (D)	WIDTH (W)
275/70 R 22.5	2.5mm	7.0mm

Mixed Terrain



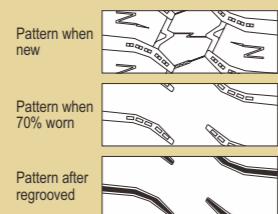
WSM2



TYRE SIZE	DIMENSION OF REGROOVE	
	DEPTH (D)	WIDTH (W)
315/80 R 22.5	2.3mm	7.0mm



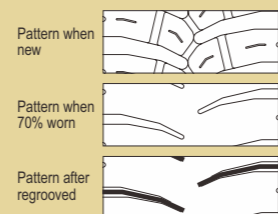
WDM2



TYRE SIZE	DIMENSION OF REGROOVE	
	DEPTH (D)	WIDTH (W)
13 R 22.5	3.0mm	7.0mm
315/80 R 22.5	3.0mm	7.0mm



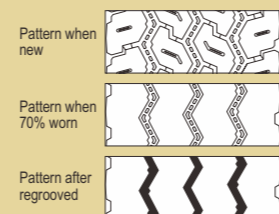
WDM1



TYRE SIZE	DIMENSION OF REGROOVE	
	DEPTH (D)	WIDTH (W)
13 R 22.5	3.0mm	7.0mm
295/80 R 22.5	3.0mm	7.0mm
315/80 R 22.5	3.0mm	7.0mm

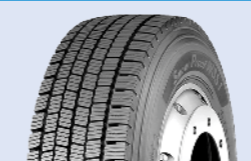


WTM1

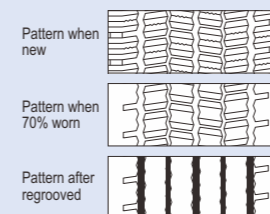


TYRE SIZE	DIMENSION OF REGROOVE	
	DEPTH (D)	WIDTH (W)
385/65 R 22.5	2.3mm	7.0mm

All Routes



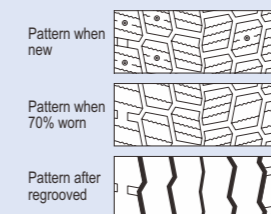
WSS1



TYRE SIZE	DIMENSION OF REGROOVE	
	DEPTH (D)	WIDTH (W)
315/70 R 22.5	2.5mm	7.0mm
295/80 R 22.5	2.5mm	7.0mm
315/80 R 22.5	2.5mm	7.0mm



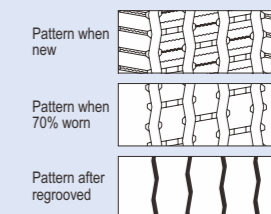
WDS1



TYRE SIZE	DIMENSION OF REGROOVE	
	DEPTH (D)	WIDTH (W)
315/70 R 22.5	2.5mm	7.0mm
295/80 R 22.5	2.5mm	7.0mm
315/80 R 22.5	2.5mm	7.0mm



WTS1



TYRE SIZE	DIMENSION OF REGROOVE	
	DEPTH (D)	WIDTH (W)
385/55 R 22.5	2.5mm	7.0mm
385/65 R 22.5	2.5mm	7.0mm

TECHNICAL DATA SHEETS

Note: The availability of products shown in this document may vary from country to country. Please consult your WESTLAKE distributor for local availability. Some tyres carry a second load/speed index marking which indicates additional operational possibilities.

⊙ = Fuel Efficiency Class

◀ = External Rolling Noise Class and Measured Value

● = Wet Grip Class

dB = See page 49 for detailed information

This table shows the load capacity (kg) per axle at tyre pressure (kPa / bar / psi) for normal operation. Some vehicle operations require specialized inflation pressure. Please contact your WESTLAKE distributor for details.

SIZE	PATTERN	LOAD INDEX (ADDITIONAL LOAD)	OVERALL WIDTH (mm)	OVERALL DIAMETER (mm)	LOADED RADIUS (mm)	ROLLING (mm) CIRC. ±2%	MEASURING RIM (inch)	OPT. RIM (inch)	⊙	●	◀	dB	SINGLE / DUAL	LOAD CAPACITY (kg) AT RELATIVE AIR PRESSURE (kPa / Bar / PSI)																												
														450	475	500	525	550	575	600	625	650	675	700	725	750	775	800	825	850	875	900	925	950								
														4.50	4.75	5.00	5.25	5.50	5.75	6.00	6.25	6.50	6.75	7.00	7.25	7.50	7.75	8.00	8.25	8.50	8.75	9.00	9.25	9.50								
All Routes																																										
Steer Axle																																										
245/70R17.5	WSR*1	136/134M	248	789	369	2406	7.50	6.75	E	D	B	72	S				2980	3090	3210	3320	3440	3550	3670	3780	3900	4010	4130	4250	4360	4480	2240											
205/75R17.5		124/122M(126/124G)	205	753	353	2297	6.00	5.25/6.75	E	D	B	72	D	2180	2260	2350	2430	2520	2600	2690	2770	2860	2940	3030	3110	3200	3300	3400														
215/75R17.5		128/126M	211	767	359	2339	6.00	6.75	E	D	B	72	S	2260	2350	2400	2500	2600	2700	2800	2900	3000	3100	3200	3300	3400																
225/75R17.5		129/127M	226	783	366	2388	6.75	6.00	E	D	B	72	D	4240	4400	4540	4730	4910	5100	5280	5470	5650	5840	6020	6210	6400																
235/75R17.5		132/130M	233	797	372	2431	6.75	7.50	E	D	B	72	S	2480	2590	2700	2810	2920	3030	3140	3250	3370	3480	3590	3700																	
245/70R19.5		136/134M	248	839	389	2559	7.50	6.75	D	D	B	72	D	4700	4910	5120	5330	5540	5750	5950	6160	6370	6580	6790	7000																	
265/70R19.5		140/138M	262	867	401	2644	7.50	6.75/8.25	D	D	B	72	S	2560	2670	2790	2900	3010	3130	3240	3350	3460	3580	3690	3800	3900	4000															
285/70R19.5		146/144M	283	895	413	2730	8.25	7.50/9.00	D	D	B	72	D	4750	4970	5200	5420	5640	5870	6090	6310	6530	6750	6980	7200	7400	7600															
385/65R22.5		WSR1	158L(160K)	387	1072	494	3248	11.75	12.25	C	C	A	71	S(158L)								6000	6250	6500	6750	7000	7250	7500	7750	8000	8250	8500										
315/70R22.5			156/150L	312	1014	468	3093	9.00	9.75	C	C	A	71	D								5600	5800	6000	6200	6400	6600	6800	7000	7200	7400	7600	7800	8000								
295/80R22.5	154/149M		298	1044	487	3184	9.00	8.25	D	C	A	71	S								5100	5270	5430	5600	5760	5930	6090	6260	6420	6590	6760	6930	7100									
315/80R22.5	154/151M(156/153L)		312	1076	500	3282	9.00	9.75	C	C	A	71	D								9180	9500	9820	10140	10460	10780	11100	11420	11740	12060	12380	12690	13000									
Drive Axle																																										
245/70R17.5	WDR*1	136/134M	248	789	369	2406	7.50	6.75	E	D	B	74	S				2980	3090	3210	3320	3440	3550	3670	3780	3900	4010	4130	4250	4360	4480												
205/75R17.5		124/122M	205	753	353	2297	6.00	5.25/6.75	E	D	B	74	D	2180	2260	2350	2430	2520	2600	2690	2770	2860	2940	3030	3110	3200	3300	3400														
215/75R17.5		128/126M	211	767	360	2339	6.00	6.75	E	D	B	74	S	2260	2350	2400	2500	2600	2700	2800	2900	3000	3100	3200	3300	3400																
225/75R17.5		129/127M	226	783	366	2388	6.75	6.00	E	D	B	74	D	4240	4400	4540	4730	4910	5100	5280	5470	5650	5840	6020	6210	6400																
235/75R17.5		132/130M	233	797	373	2431	6.75	7.50	E	D	B	74	S	2480	2590	2700	2810	2920	3030	3140	3250	3370	3480	3590	3700																	
245/70R19.5		136/134M	248	839	389	2559	7.50	6.75	E	C	B	74	D				2980	3090	3210	3320	3440	3550	3670	3780	3900	4010	4130	4250	4360	4480												
265/70R19.5		140/138M	262	867	401	2644	7.50	6.75/8.25	E	C	B	74	S				5520	5740	5970	6200	6430	6650	6880	7110	7340	7560	7790	8020	8250	8480												
285/70R19.5		146/144M	283	895	413	2730	8.25	7.50/9.00	E	C	B	74	D				3430	3570	3720	3860	4000	4150	4290	4430	4570	4710	4860	5000														
315/70R22.5		WDR1	154/150L(152/148M)	312	1022	472	3117	9.00	9.75	E	C	B	74	S								5100	5300	5500	5700	5900	6100	6300	6500	6700	6900	7100	7300	7500								
295/80R22.5			152/149M	298	1050	489	3203	9.00	8.25	E	C	B	74	D								9180	9530	9880	10230	10580	10930	11280	11630	11980	12330	12680	13040	13400								
315/80R22.5	156/153L(154/151M)		312	1082	506	3325	9.00	9.75	E	C	B	74	S								5100	5270	5430	5600	5760	5930	6090	6260	6420	6590	6760	6930	7100									
Trailer Axle																																										
385/55R22.5	WTR1	160K(158L)	386	996	464	3018	12.25	11.75	C	C	A	71	S(160K)								6200	6430	6670	6900	7140	7370	7600	7830	8070	8300	8500	8770	9000									
385/65R22.5		158L(160K)	387	1072	496	3248	11.75	12.25	C	C	B	72	S(158L)								6000	6250	6500	6750	7000	7250	7500	7750	8000	8250	8500											
425/65R22.5		165K	430	1124	518	3406	13.00	14.00	C	C	B	73	S								7270	7530	7780	8030	8280	8530	8780	9040	9290	9540	9790	10040	10300									
445/65R22.5		169K	444	1150	529	3485	13.00	14.00	C	C	B	73	S								8370	8640	8910	9180	9450	9720	9990	10250	10520	10790	11060	11330	11600									

SIZES & PATTERNS

SIZE	LR/PR	SERVICE INDEX	PATTERN	AXLE POSITION *	APPLICATION *	ROLLING RESISTANCE	WET GRIP	NOISE LEVEL	NOISE dB(A)	M+S	3PMSF
17.5*	205/65R17.5	J/18	129/127K(132/132F)	WTX1	T	X	D	C	B	71	✓
	245/70R17.5	H/16	136/134M	WSR+1	S	R	E	D	B	72	✓
	245/70R17.5	H/16	136/134M	WDR+1	D	R	E	D	B	74	✓
	245/70R17.5	J/18	143/141J(146/146F)	WTX1	T	X	D	C	B	71	✓
	205/75R17.5	G/14	124/122M(126/124G)	WSR+1	S	R	E	D	B	72	✓
	205/75R17.5	G/14	124/122M	WDR+1	D	R	E	D	B	74	✓
	215/75R17.5	G/14	128/126M	WSA2 ^{LT}	S	A	E	D	A	72	✓
	215/75R17.5	G/14	128/126M	WDA2 ^{LT}	D	A	E	D	A	72	✓
	215/75R17.5	G/14	128/126M	WSR+1	S	R	E	D	B	72	✓
	215/75R17.5	G/14	128/126M	WDR+1	D	R	E	D	B	74	✓
	215/75R17.5	H/16	135/133J	WTX1	T	X	D	C	B	71	✓
	225/75R17.5	G/14	129/127M	WSA2 ^{LT}	S	A	E	D	A	72	✓
	225/75R17.5	G/14	129/127M	WDA2 ^{LT}	D	A	E	D	A	72	✓
	225/75R17.5	G/14	129/127M	WSR+1	S	R	E	D	B	72	✓
	225/75R17.5	G/14	129/127M	WDR+1	D	R	E	D	B	74	✓
	235/75R17.5	G/14	132/130M	WSA2 ^{LT}	S	A	E	D	A	72	✓
	235/75R17.5	G/14	132/130M	WDA2 ^{LT}	D	A	E	D	A	72	✓
	235/75R17.5	G/14	132/130M	WSR+1	S	R	E	D	B	72	✓
	235/75R17.5	G/14	132/130M	WDR+1	D	R	E	D	B	74	✓
	235/75R17.5	H/16	143/141J(144/144F)	WTX1	T	X	D	C	B	71	✓
19.5*	445/45R19.5	L/20	160L	WTL1	T	L	C	C	B	73	✓
	435/50R19.5	L/20	160J	WTL1	T	L	D	C	B	73	✓
	245/70R19.5	H/16	136/134M	WSR+1	S	R	D	D	B	72	✓
	245/70R19.5	H/16	136/134M	WDR+1	D	R	E	C	B	74	✓
	245/70R19.5	J/18	141/140J	WTX1	T	X	C	C	B	71	✓
	265/70R19.5	H/16	140/138M	WSA2 ^{LT}	S	A	D	C	A	72	✓
	265/70R19.5	H/16	140/138M	WDA2 ^{LT}	D	A	E	C	B	74	✓
	265/70R19.5	H/16	140/138M	WSR+1	S	R	D	D	B	72	✓
	265/70R19.5	H/16	140/138M	WDR+1	D	R	E	C	B	74	✓
	265/70R19.5	J/18	143/141J	WTX1	T	X	C	C	B	71	✓
	285/70R19.5	H/16	146/144M	WSR+1	S	R	D	D	B	72	✓
	285/70R19.5	H/16	146/144M	WDR+1	D	R	E	C	B	74	✓
	285/70R19.5	J/18	150/148J	WTX1	T	X	C	C	B	72	✓
22.5*	13R22.5	J/18	156/151K	WDM2	D	M	D	C	B	74	✓
	13R22.5	J/18	156/151K	WDM1	D	M	E	C	B	74	✓
	355/50R22.5	L/20	156K(154L)	WSL1	S	L	D	C	B	73	✓
	295/55R22.5	H/16	147/145K	WDL1	D	L	D	C	B	74	✓
	385/55R22.5	L/20	160K(158L)	WSA2	S	A	C	B	B	73	✓
	385/55R22.5	J/18	158L(160K)	WSL1	S	L	D	C	B	73	✓
	385/55R22.5	L/20	160K(158L)	WTL1	T	L	C	C	A	71	✓
	385/55R22.5	L/20	160K(158L)	WTR1	T	R	C	C	A	71	✓
	385/55R22.5	J/18	158L	WTS1	T	S	D	C	A	71	✓
	295/60R22.5	J/18	150/147K(149/146L)	WSL1	S	L	D	C	B	73	✓
	295/60R22.5	J/18	150/147K(149/146L)	WDL1	D	L	D	D	B	74	✓
	315/60R22.5	L/20	154/150L	WSL1	S	L	D	C	B	73	✓
	315/60R22.5	L/20	154/150K(152/148L)	WDL1	D	L	D	C	B	74	✓
	385/65R22.5	J/18	158L(160K)	WTL1	T	L	C	C	A	71	✓
	385/65R22.5	J/18	158L(160K)	WSR1	S	R	C	C	A	71	✓
	385/65R22.5	J/18	158L(160K)	WTR1	T	R	C	C	B	72	✓
	385/65R22.5	L/20	160K(158L)	WTM1	T	M	C	C	B	73	✓
	385/65R22.5	L/20	160K	WTS1	T	S	E	C	A	71	✓
	425/65R22.5	L/20	165K	WTR1	T	R	C	C	B	73	✓
	445/65R22.5	L/20	169K	WTR1	T	R	C	C	B	73	✓
	275/70R22.5	H/16	150/145J	WAU1	A	U	D	C	A	71	✓
	315/70R22.5	L/20	156/150L	WSA2	S	A	D	B	B	73	✓
	315/70R22.5	L/20	156/150L	WDA2	D	A	D	C	B	74	✓
	315/70R22.5	L/20	156/150L	WSR1	S	R	C	C	A	71	✓
	315/70R22.5	L/20	154/150L(152/148M)	WDR1	D	R	E	C	B	74	✓
	315/70R22.5	L/20	156/150L(152/148M)	WSS1	S	S	E	C	B	73	✓
	315/70R22.5	L/20	154/150L(152/148M)	WDS1	D	S	E	C	B	74	✓
	295/80R22.5	J/18	154/149L	WSA2	S	A	D	C	B	73	✓
	295/80R22.5	J/18	154/149K	WDA2	D	A	E	C	B	74	✓
	295/80R22.5	J/18	154/149M	WSR1	S	R	D	C	A	71	✓
	295/80R22.5	J/18	152/149M	WDR1	D	R	E	C	B	74	✓
	295/80R22.5	J/18	152/149K	WDM1	D	M	E	B	B	74	✓
	295/80R22.5	J/18	154/149L	WSS1	S	S	E	C	B	73	✓
	295/80R22.5	J/18	154/149L	WDS1	D	S	E	C	B	74	✓
	315/80R22.5	J/18	156/153L(154/151M)	WSA2	S	A	D	B	B	73	✓
	315/80R22.5	J/18	156/153L(154/151M)	WDA2	D	A	D	C	B	74	✓
	315/80R22.5	J/18	154/151M(156/153L)	WSR1	S	R	C	C	A	71	✓
	315/80R22.5	J/18	156/153L(154/151M)	WDR1	D	R	E	C	B	74	✓
	315/80R22.5	J/18	156/153K(154/151L)	WSM2	S	M	D	C	B	74	✓
	315/80R22.5	J/18	156/153K(154/151L)	WDM2	D	M	E	C	B	74	✓
	315/80R22.5	J/18	156/153K(154/151L)	WDM1	D	M	E	B	B	74	✓
	315/80R22.5	J/18	154/151M(156/153L)	WSS1	S	S	E	C	B	73	✓
	315/80R22.5	J/18	156/153K(154/151L)	WDS1	D	S	E	C	B	74	✓

* AXLE POSITION: S – Steer Axle; D – Drive Axle; T – Trailer Axle; A – All Axle
 * APPLICATION: A – All Routes+; L – Long Run; R – All Routes; M – Mixed Terrain; X – MaX Load; U – Urban Master; S – Snow Proof

TECHNICAL INFORMATION

Speed symbol

The speed symbol refers to the maximum speed capabilities of the tyre. It is only valid for tyres that are properly inflated and loaded within their assigned load index.

Speed symbol	Speed (km/h)
E	70
F	80
G	90
J	100
K	110
L	120
M	130

Load index

The load index is the maximum load-carrying capacity of a tyre under a specific condition.

LI	kg	LI	kg	LI	kg	LI	kg
115	1215	129	1850	143	2725	157	4125
116	1250	130	1900	144	2800	158	4250
117	1285	131	1950	145	2900	159	4375
118	1320	132	2000	146	3000	160	4500
119	1360	133	2060	147	3075	161	4625
120	1400	134	2120	148	3150	162	4750
121	1450	135	2180	149	3250	163	4875
122	1500	136	2240	150	3350	164	5000
123	1550	137	2300	151	3450	165	5150
124	1600	138	2360	152	3550	166	5300
125	1650	139	2430	153	3650	167	5450
126	1700	140	2500	154	3750	168	5600
127	1750	141	2575	155	3875	169	5800
128	1800	142	2650	156	4000	170	6000

LIMITED MANUFACTURER'S WARRANTY

Who is Eligible for Warranty Coverage

You are eligible for the benefits of this warranty if you meet all the following criteria:

You are the owner or authorized agent of the owner of new WESTLAKE radial light truck or radial medium truck tyres

Your tyre(s) bears Department of Transportation (DOT) prescribed tyre identification numbers and are not branded "NA" (Not Adjustable) or buffed

Your WESTLAKE TBR tyres have been used only on the vehicle on which they were originally installed according to the vehicle manufacturers or

WESTLAKE's manufacturer recommendations

Terms & Conditions

All radial truck tyre warranties are limited to the original purchaser and the original vehicle on which they were mounted and are not assignable to subsequent purchasers or vehicles. Original receipts must accompany all claims.

The cost of mounting, balancing and any other charges by the dealer in connection with the replacement of the tyre are required to be paid by the purchaser.

What is Covered Under This Warranty and for How Long

All radial truck tyre warranties are limited to the original purchaser and the original vehicle on which they were mounted and are not assignable to subsequent purchasers or vehicles. Original receipts must accompany all claims.

The cost of mounting, balancing and any other charges by the dealer in connection with the replacement of the tyre are required to be paid by the purchaser.

What is Covered Under This Warranty and for How Long

The warranty covers WESTLAKE radial light or medium truck tires manufactured by Zhongce Rubber Group Co., Ltd. after January/01/2019 with the country of origin of Thailand.

Zhongce Rubber Group Co., Ltd. (ZC RUBBER) warrants to the original purchaser that every new radial truck tyre bearing the brand of "WESTLAKE" will be free from defects in materials and workmanship.

This warranty is limited to FIVE (5) year from the original date of manufacture.

2mm FREE REPLACEMENT WARRANTY: Any tyre adjusted utilizing this limited free replacement warranty will be replaced at no charge if the tyre fails during the first 2mm of original tread depth, due to a defect in materials and/or workmanship.

This warranty is limited to the respective usable original tread depth, which is the original tread depth reduced by the Tread Wearing Index (TWI) depth.

This limited warranty is applicable only in European Union and any tyre used or equipped on a vehicle registered or operated outside European Union are not covered by this warranty.

How to Calculate the Prorated Amount

The replacement price will be calculated by multiplying the current WESTLAKE "predetermined price for adjustment" or current advertised selling price at the adjustment location (whichever is lower) by the percentage of sable original tread that has been worn off at the time of adjustment. You pay for mounting, balancing, and amount equal to the full current Federal Excise Tax and any other applicable taxes and fees for the comparable new WESTLAKE replacement tyre.

What is Not Covered

Irregular wear or tyre damage due to:

- 1 Road Hazards (i.e. punctures, snags, cuts, impact breaks, etc.)
- 2 Wreck, collision, or fire
- 3 Improper inflation, overloading, high speed spinup, misapplication, misuse, negligence, racing, chain damage, or improper mounting or dismounting
- 4 Mechanical condition of the vehicle
- 5 Ride disturbance after the first 2mm treadwear or due to damaged wheels or any vehicle condition
- 6 Any tyre intentionally altered after leaving a factory producing the brand of "WESTLAKE" tyres to change its appearance (example: white inlay on a black tyre)
- 7 Tyres with weather cracking which were purchased more than five(5) years prior to presentation for adjustment. If you have no proof of purchase date, tyres manufactured five (5) or more years prior to presentation are not covered
- 8 Tyre branded or marked "Non-Adjustable (N/A) or "Blemished" (Blem), or buffed or previously adjusted
- 9 Willful abuse
- 10 Claims for ozone or weather cracks during original tread life on tyres more than 5 years from date of manufacture
- 11 Mechanical defects (such as brakes, shocks, worn steering and/or suspension parts, rim, etc.)

Failure, damage or irregular wear due to:

- 1 Accident or vandalism, improper misalignment, wheel imbalance, faulty shocks or brakes
- 2 Misapplication of tyre, use of improper rim and/or improper inner tube
- 3 Alteration of the tyre or addition of alien material or transfer from one vehicle to another
- 4 TBR tyre failed due to faulty retreading or material
- 5 Cost of mounting and balancing service except as noted above
- 6 With the serial # buffed or cut.
- 7 With remaining tread in any groove equal or less than TWI depth
- 8 With a ride complaint that occurs after the first 2mm of tread wear
- 9 Loss of time or use, loss of use of vehicle, inconvenience, or any incidental or consequential damages
- 10 Material added to a tyre after leaving a factory producing the brand of "WESTLAKE" tyres: (example: tyre fillers, sealants, or balancing substances). If the added material is the cause of the tyre being removed from service, the tyre will not be adjusted

End of Warranty

A tyre has delivered its full original tread life and the new tyre coverage of this warranty ends when the treadwear indicators become visible, or five(5) years from the date of original tyre manufacture or new tyre purchase date. (Without proof of purchase, date of manufacture will be used to determine age.)

To Obtain an Adjustment

In order to be eligible for the limited warranty service, the purchaser must:

- 1 Present the defective tyre to an authorized dealer from whom the original purchase was made
- 2 Present proof of purchase to the satisfaction of the dealer
- 3 Complete and sign a warranty claim form which is available at any authorized dealer
- 4 Retain and present the warranty card along with proof of date and place of purchase in order to make a claim. The authorized dealers name and address from whom the tyres were purchased must be also included on the warranty form
- 5 At the time of purchase the tyre(s) must be properly installed with proper air pressure and the wheels balanced
- 6 You must pay for taxes, fees or any additional services you order at the time of adjustment

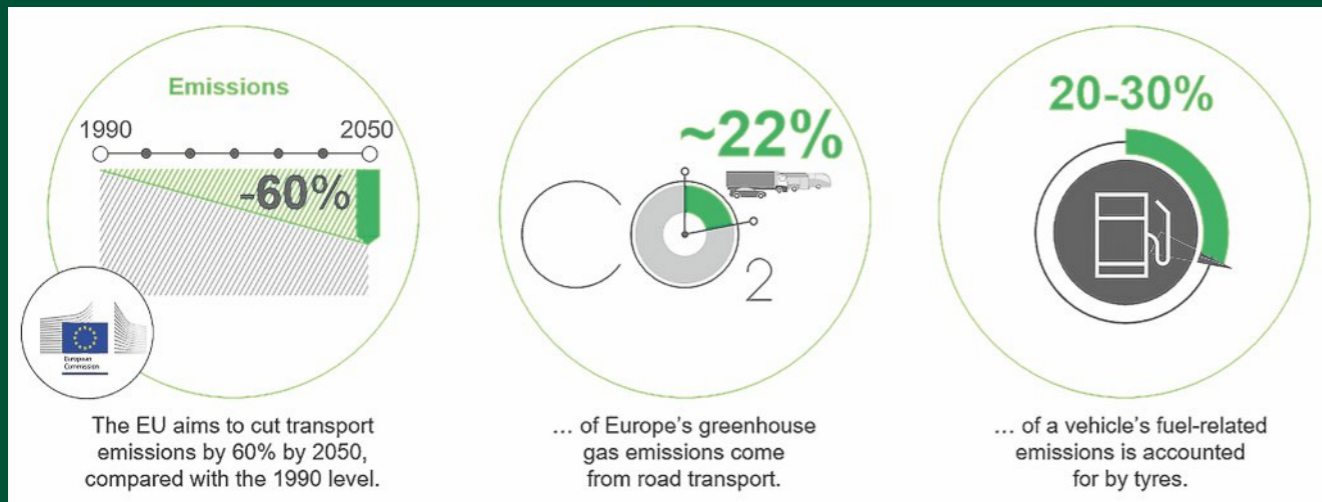
Warning

Serious injury or property damage may result from:

- 1 **TYRE FAILURE DUE TO UNDERINFLATION/OVERLOADING.** Follow the owner's manual or tyre placard in vehicle
- 2 **TYRE FAILURE DUE TO EXCESSIVE HIGH SPEED.** Follow the owner's manual or tyre placard in vehicle
- 3 **EXPLOSION OF TYRE/RIM ASSEMBLY DUE TO IMPROPER MOUNTING.** Only specially trained persons should mount tyres
- 4 **FAILURE TO MOUNT RADIAL TYRES ON APPROVED RIMS**
- 5 **FAILURE TO DEFLATE SINGLE OR DUAL ASSEMBLIES COMPLETELY BEFORE DISMOUNTING**
- 6 **TYRE SPINNING.** On slippery surfaces such as snow, mud, ice, etc., do not spin tyres in excess of 55 kpm, as indicated on the speedometer. Personal injury and severe damage may result from excessive wheel spinning, including tyre disintegration or axle failure

INTRODUCING THE NEW EU TYRE LABEL

Lowering car emissions with EU tyre labels



The EU has committed to cutting its greenhouse gas emissions to reach climate neutrality by 2050. Reducing CO₂ emissions from road transport plays a major part in fulfilling these goals.

Choosing more fuel-efficient tyres can contribute to reducing transport emissions. In order to help consumers make informed decisions, the EU is introducing a new labelling scheme for tyres which will come into force on May 1, 2021.

The EU tyre label will allow EU consumers to choose more fuel-efficient tyres, which can lead to great savings for both end users and commercial users in terms of both costs and emissions. Road safety is improved through better wet grip while information on noise levels help reduce traffic-related noise pollution.

NOTES:

The New EU Tyre Label

- > Under the **new regulation**, bus and truck tyres will also be covered (**tyre class C1, C2, C3**).
- > Additional information (**tyre type identifier** = art. no.).
- > In addition to the standard label, there are also options for including icons relating to **severe snow conditions** (3PMSF) and/or grip in icy conditions (for C1 tyres only).
- > **Noise classes:** ABC replace sound waves.
- > **Reclassification for lower label classes:** D is the new E; Class D no longer empty (for C1 & C2 tyres only); F and G merge to form E.
- > **QR code** for each tyre type identifier with link to EU product database (EPREL).

